

African Markets Revealed

September 2019



Ferishka Bharuth
Mulalo Madula
Phumelele Mbiyo
Fausio Mussa
Jibrán Qureishi
Dmitry Shishkin
Gbolahan Taiwo

Contents

| | |
|-----|---|
| 2 | African markets: unperturbed by trade uncertainty |
| 21 | Angola: still should exit recession in 2020 |
| 27 | Botswana: spending in pre-election year to crimp growth |
| 33 | Côte d'Ivoire: still strong growth, but some slowing likely |
| 39 | DRC: finally, a new cabinet |
| 45 | Egypt: growth of likely over 5% in the medium term |
| 51 | Ethiopia: GDP growth will likely subside |
| 57 | Ghana: transitioning to a period without IMF support |
| 63 | Kenya: private sector reforms required |
| 69 | Malawi: poised for stronger growth |
| 75 | Mauritius: fiscal policy expansionary, ahead of elections |
| 81 | Morocco: still stable – but growth may slow |
| 87 | Mozambique: peace and LNG projects improve the outlook |
| 93 | Namibia: drought delays economic recovery |
| 99 | Nigeria: a long, long road |
| 105 | Rwanda: robust growth momentum |
| 111 | Senegal: set to stage solid growth again |
| 117 | Tanzania: infrastructure spending to support growth |
| 123 | Tunisia: a year of setbacks |
| 129 | Uganda: delay in oil investment decision |
| 135 | Zambia: fiscal policy restraint required |
| 141 | Glossary |

Unperturbed by trade uncertainty

- Our constructive assessment of Africa's economic progress is informed by a number of factors that still point to robust economic growth on a multi-year basis. Commodity-exporting countries that experienced recession at some point between 2015 and 2018 are likely to have economic growth accelerating over the next 2-y. Of course, some of them, like Angola and Namibia, are still in recession. However, even in these economies, growth seems likely to resume next year. Combined with persistently high growth among the non-commodity-exporting countries, economic growth in Africa seems set to accelerate.
- We are not alone in our relatively positive assessment of Africa's growth potential. The IMF's *World Economic Outlook* points to Sub-Saharan Africa as the only region likely to have economic growth accelerating this year relative to last year despite the uncertainty that rising trade protectionism poses to global economic growth. Sure, in its Jul Update of the WEO the IMF lowered its forecast for SSA growth to 3.4% y/y in 2019 from the 3.8% y/y that it had forecast in the Jul 18 Update of the WEO. But the 2019 growth forecast is still higher than the Fund's estimated 3.1% y/y growth in 2018 despite the forecast slowdown in global growth to 3.2% y/y in 2019 from 3.6% y/y in 2018.
- Uncertainty regarding trade is a factor leading to flux in financial markets too. But the nature of the impact of this uncertainty is quite curious. Suppose the end result of the US administration's trade policy was to increase the effective tariff rate on Chinese imports to some number – say 50%. Consider another possible outcome being to increase the effective tariff rate on all imports to the US in the same manner. Then tariffs on Chinese imports would trigger substitution of imports from China to other low-cost manufacturing sources, perhaps in Asia. But an increase in tariffs on all imports would not trigger such substitution. Either way, the implications of either tariff policy on US economic growth could be estimated with a reasonable degree of confidence. Regardless, trade uncertainty hardly warrants the degree of flux we have seen in financial markets, seemingly with every communication from either set of policymakers triggering an exaggerated movement in asset prices.
- There haven't been many opportunities to put on recovery trades in carry or local currency duration trades thus far this year. As the adjacent table shows, the FX return with carry, on the most tradable currencies in our coverage, is less than 5% thus far this year. UGX duration seems sufficiently compelling for us to enter a trade. Perhaps KES duration warrants a careful look. In the 3-m to the end of Jul, it depreciated at over a 10% annualised pace. If the pressure persists in Q4:19, then it might offer the chance of a recovery trade since a surge in flower exports during Q1 tends to support the KES. Given conservative monetary policy management, the MZN is also worth a look. Pity the implied NDF yields are so low and the bonds have this fixed-floating structure. But, even with the upcoming elections, the medium-term outlook for the BOP should be favourable for the MZN.
- We are inclined to believe that the Eurobond market will experience a solid recovery in the next 2 – 3 months. We like Egypt and Senegal, and have recently taken tactical overweight exposure to Gabon and Nigeria.

| USD performance, YTD | |
|-------------------------------|------------|
| Asset class | Return, % |
| FX | |
| Africa 8, spot (with carry) | -2.6 (4.8) |
| Africa 10, spot (with carry) | -2.4 (4.1) |
| EM 10, spot (with carry) | -0.8 (3.7) |
| Bloomberg USD index, spot | 1.2 |
| Local bonds | |
| Africa 8 | 13.3 |
| Africa 10 | 11.2 |
| EM 10 | 10.8 |
| Bloomberg DM Sovereign | 5.8 |
| Credit | |
| Africa (ex SA) | 16.9 |
| Africa | 16.7 |
| EMBI Global | 12.2 |
| Bloomberg HY Global Corporate | 9.9 |
| Equity | |
| MSCI Frontier Africa | -5.2 |
| MSCI Africa | 2.7 |
| MSCI EM | 5.3 |
| MSCI DM | 16.5 |

Source: Bloomberg; Standard Bank Research

SSA growth acceleration proceeding against global slowdown

Despite the often dramatic reaction in the financial markets to every twist and turn of the US-China trade negotiations, we find it hard to believe that the economic impact of this on Africa is going to be significant. Hence, we retain a constructive outlook for economic growth on the continent.

We continue to stress that the channel through which the trade spat between these two countries can affect economic growth on the continent would be through its impact on commodity prices. By extension, it would be the commodity-producing countries that would feel it the most.

Despite these concerns, it is worth pointing out that even the IMF expects economic growth in Sub-Saharan Africa to accelerate to 3.4% y/y this year from 3.1% y/y in 2018, and then further on to 3.6% y/y in 2020. Contrast that with the Fund's forecast deceleration in global growth to 3.2% y/y from 3.6% y/y in 2018. Notably, the Fund expects global growth to accelerate to 3.5% y/y in 2020.

The Jul update of the *World Economic Update* points to the slowing in global growth being widespread. In fact, the forecast recovery in 2020 might be in doubt. The IMF forecasts growth among advanced economies decelerating to 1.9% y/y and 1.7% y/y in 2019 and 2020 respectively from 2.2% y/y in 2018. Interestingly, it expects the deceleration in US economic growth to extend to 2020 as well, with the economy growing by 1.9% y/y from 2.6% y/y it expects for 2019 and the actual growth rate of 2.9% y/y in 2018. Evidently, this deceleration is not limited to the unwinding of the fiscal stimulus in 2018.

The Fund expects Chinese growth to decelerate to 6.2% y/y and 6.0% y/y in 2019 and 2020 respectively from 6.6% y/y in 2018. Curiously, it expects emerging and developing economies to accelerate to 4.7% y/y growth in 2020 from 4.1% y/y in 2019 and 4.5% y/y in 2018. The recovery that the Fund projected in 2020 seems to be predicated on a recovery in Latin America and emerging and developing Europe. Of course, some Latin American countries scored own goals through the macro policies they pursued.

Also noteworthy is the Fund's expectation of a recovery in the euro area in 2020. It expects growth there to accelerate to 1.6% y/y from 1.3% y/y in 2019 and 1.9% y/y in 2018. It expects countries like Germany and Italy to sponsor that recovery. Perhaps if this recovery were not to materialise, then even emerging and developing European countries would not see the revival that the IMF expects.

Trade uncertainty – the impact is probably overstated

One reason we have not been overly concerned about the impact of the trade war on African economic growth is that it is very much US-centric. It is the US administration that is either imposing tariffs or threatening to do so on other countries. First in the crosshairs were the US's NAFTA partners, then China, then the EU. Interestingly, the EU, China, Mexico and Canada are not engaged in any trade war among themselves.

What we find strange regarding the trade war is the responsiveness of the financial markets to every twist and turn, every announcement – be it new tariffs, recanting new tariffs, or going back to imposing them. The market moves can seem to be exaggerated somewhat, with the markets apparently anticipating doom one moment, then prolonged prosperity the next.

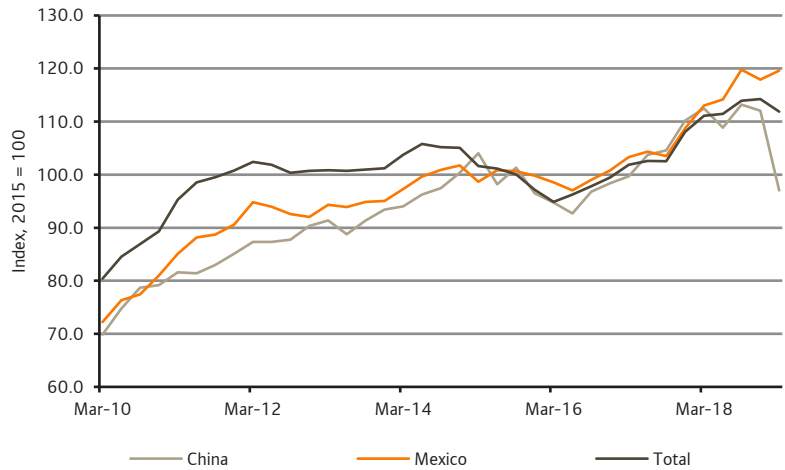
Suppose instead there was a reasonable basis to believe that the end-game of all these trade policy moves by the US administration was to increase effective tariff rates in the US on Chinese imports to some number, say 50% or 150%, then the impact of that on US economic growth can be estimated with a fair degree of confidence. Of course, in making such estimates, the market would have to factor in the potential substitution of Chinese imports with imports from other low-cost locations, perhaps also in Asia.

This is, in fact, not an idle academic exercise. There are already some indications that this substitution is taking place. The trajectory of the US trade deficit has not changed much as a result of the trade war. While overall US imports are still elevated, US imports of Chinese goods have slowed down, and has been countered by increased imports from somewhere else such as say Mexico (Figure 1).

So, evidently imposing tariffs on Chinese imports has a distributional effect, shifting US demand away from China. So, the impact of US tariffs on Chinese imports may not affect global demand that much, especially of commodities. It's not so clear what the

impact of retaliatory Chinese tariffs on US imports is. But we suspect it would not affect the prices of the commodities that matter to Africa’s commodity exporters in such a deleterious manner that we would need to get worried.

Figure 1: US import trajectory – quarterly seasonally adjusted data



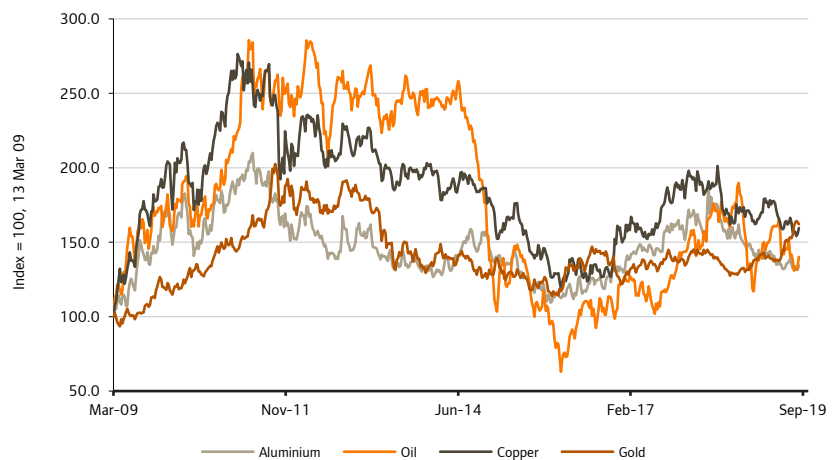
Source: United States Bureau of Economic Analysis

Of course, there is always the likelihood that the end result of US trade policy moves is to increase the effective tariff rate on all US imports, not just those sourced from China. Arguably, the impact of this trade policy would be a larger negative impact on commodity prices that matter for Africa’s commodity exporters than just tariffs on imports of Chinese goods.

Crucially, the key take-away is that if there was a reasonable basis for predicting what the end game of US trade policy moves is, then much of the flux in financial markets, especially commodity markets, would be far less than what we are seeing right now. For that reason, we don’t see the flux in global financial markets having much impact on Africa’s economic trajectory.

Commodity prices: no longer falling

Figure 2: Commodity prices seem to be bottoming out



Source: Bloomberg

Commodity prices have broadly declined since publication of the last edition of this report in May. Most notably are oil prices that, at the time of writing, were roughly 13%

lower than they were in mid-May. They are off the lows reached during this period, up over 10% from those lows.

There is still plenty to suggest that oil prices will remain mostly above USD60.0/bbl over the next 4 – 6 months. Geopolitical strains surrounding Iran, lately implicated in an attack on a Saudi Arabian oil facility, could push oil prices higher. Additionally, OPEC seems prepared to stick with production quotas to keep prices elevated.

Consensus forecasts for oil prices drifted marginally lower in recent months, with forecasts putting the Brent crude oil price roughly around USD65/bbl at the end of both 2019 and 2020. The average for the Brent crude oil price is near USD65.0/bbl thus far this year. We have kept USD65.0/bbl as the assumption for our forecasting purposes.

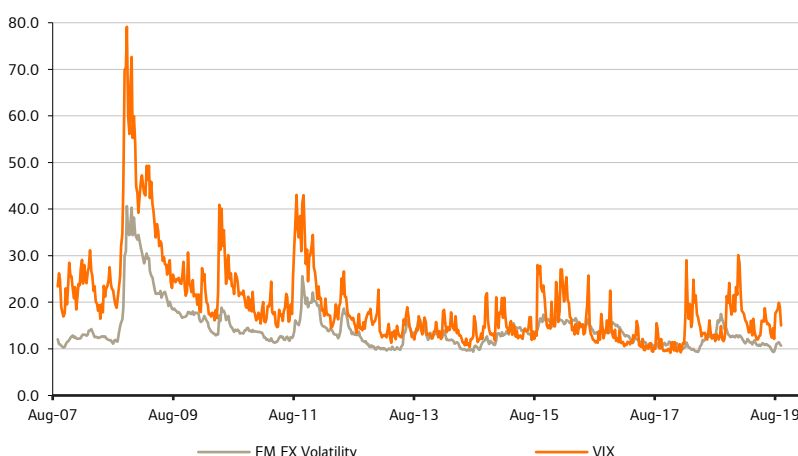
Of course, the supply-demand balance for oil might have a significant impact on oil prices. The broad expectation of the International Energy Agency has been that global oil demand growth would subside, thereby potentially depressing oil prices. Any upward revisions to those forecasts might support oil prices. Additionally, the behaviour of OPEC member countries will be crucial. A few, like Nigeria, have been producing in excess of their quota. Non-compliance for an extended time might prompt others to follow suit.

Consensus forecasts for copper prices were consistently revised lower over the course of this year. The evident global economic slowdown may have been a factor leading to those forecast revisions. Yet, even as copper prices approached USD5,600/MT, consensus forecasts envisaged them being above USD6,000/MT by the end of this year and marginally higher by the end of 2020.

Global risk appetite: in flux, but a risk-on bias will probably prevail

At the time of writing the S&P 500 Volatility index had fallen close to the 15 level, having risen above 20 during Aug. To be fair, the index was pretty much at that level when we published the last edition of this report, first having declined to a low of about 12.

Figure 3: Volatility rising again



Source: Bloomberg; Standard Bank Research

That same pattern is likely to be repeated over the next 4 – 6 months. The markets went from worrying that overtightening of monetary policy by the Fed potentially put the US economy on a trajectory to recession. Having seemingly resisted the market’s forecasts, the Fed not only called a pause in its rate hiking cycle but actually switched to cutting the Fed Funds rate. This switch could be enough to resuscitate risk appetite.

There is always a risk that bellicose rhetoric regarding trade from the US administration might agitate the markets now and again over the next 4 – 6 months. However, it is likely that political calculus will start to influence the administration's approach to trade negotiations. Being up for re-election, the US president would be well served by a strong and strengthening economy closer to the election. Evidence thus far has suggested that such bellicose rhetoric undermines sentiment and could add impetus to the slowdown in the real economy. So, refraining from stoking such concerns might be in the president's interest.

Global rates: divergence between US and other developed markets

Over the next 2 – 3 months, perhaps the market will be mostly focussed on whether the Fed will follow through with the widely anticipated cuts to the Fed Funds rate. Consensus forecasts have the Fed Funds rate at 1.75% by the end of the year, 50 bps lower than the current level. During 2020, the consensus expectation is for the Fed to hold its Fed Funds rate unchanged. Steve Barrow, our G10 Strategist, concurs.

Figure 4: US Treasury 10-y yields below Fed Funds rate



Source: Bloomberg

The case for the Fed to cut its policy rates has built up over the course of the past 5-m, with consensus forecasts being ratcheted lower over that period. There has been mounting evidence that economic activity has been decelerating.

Of course, the likelihood of an economic slowdown was not completely a surprise to the market. Economic growth was boosted by fiscal stimulus last year, something that was bound to unwind this year. However, what might have given the market a scare is the impact of the uncertainty regarding trade, especially given the US administration's tariff policy and retaliation by other governments, like China.

Quite frankly, the Fed was slow in coming around to the view that it needed to cut its policy rates. Anxiety in the markets built up in the meantime, with worries mounting that the US economy would slump into a recession. The curve flattened as longer-term yields collapsed. Various parts of the yield curve inverted, heightening that anxiety regarding the economic outlook. Inversion of the US yield curve has typically been a good predictor of US recessions.

US 10-y yields fell below 1.5% in late Aug. Since then, they have risen above 1.7%, the level they were at the time of writing. Perhaps this increase reflects waning concerns about the economic outlook. If the Fed indeed delivers the 50 bps of rate cuts that is the consensus forecast, then there is a likelihood that 10-y rates will increase further. Steve Barrow expects the US 10-y yield to rise to 1.9% by the end of Q2:20, on the way to 2.3% by the end of 2020.

Figure 5: 10-y generic US Treasury and German bund yields



Source: Bloomberg

The situation is a bit different among other developed markets. For instance, in the euro zone yields are likely to initially fall further, becoming more negative. Consensus forecasts for the 10-y Bund yield put it closer to -0.5% by the end of this year, rising to -0.14 by the end of 2020. Steve has the 10-y Bund yield reaching -1.0% in Q1:20, before rebounding to -0.4% by the end of 2020.

The ECB is expected to ease the policy stance, perhaps reviving asset purchases. Of course, the transition in leadership of that institution, with Christine Lagarde to replace Mario Draghi as President of the Governing Council of the ECB, creates a bit of uncertainty. But there is a widespread belief that the ECB is somewhat behind the curve, and more easing is baked in.

Other developed country central banks are likely to ease monetary policy. The BOE, Bank of Canada, Reserve Bank of Australia, Reserve Bank of New Zealand are central banks that Steve Barrow expects to ease monetary policy. In all of these cases, he expects the respective 10-y yields to initially fall in the next 3 – 6 months.

Figure 6: EM 10-y average bond yields versus US Treasury 10-y yields



Source: Bloomberg; Standard Bank Research

Political risks: limited in the next 4-m

Among the countries in our coverage that have elections for the remainder of this year, perhaps the most closely watched will be the Mozambican ones in Oct. The outcome of the elections could be close, and contentious.

Our core view is that these elections will be peaceful, and the aftermath will not be characterised by violence. It certainly helps that the RENAMO party and the government signed a peace agreement that, among other things, commit them to integrating RENAMO's fighters into the army and the decentralisation of power.

The latter could be a crucial aspect, allowing RENAMO to appoint governors in provinces that it has a majority following rather than have those appointed by the central government. Certainly, the stakes will be high. The winner of the elections will essentially oversee the process that will lead to the commencement of commercial production of natural gas.

Arguably, Namibia's elections in Nov are not going to be as close, nor as contentious. The ruling party has a large majority currently. So much so that the internal processes that led to nominations for parliament by the party may actually turn out to be more contentious than the elections themselves.

Ghana's elections are at the end of next year. But their impact on the markets could well be felt over the next 4-m. To be sure, it is not that there is much uncertainty. There are two major political parties that the electorate has switched between every two terms since the reintroduction of multi-party democracy in the early 90's. The ruling NPP won the elections in 2016, and it is looking to retain power. Will that empirical regularity of the electorate giving the party in power another term in office persist? That remains to be seen.

Regardless, the market continues to fret that the NPP will essentially try to buy the election by passing a populist budget next year. There are concerns that the government will not observe the Fiscal Responsibility Act that was passed last year. Hence, we see little to suggest that appetite for GHS bonds will recover anytime soon. To be sure, all these vexations aside, foreign investors have not been exiting the GHS bond market in droves.

Côte d'Ivoire's elections are highly unpredictable, something likely to keep the market apprehensive despite the elections only being next year. As is the norm, coalitions will be formed in the run-up to the Oct 20 elections. Yet, at this stage it is not clear how these will be composed. Guillaume Soro, the former President of the National Assembly who fell out with President Ouattarra, seems to be positioning himself for a presidential run.

Other notable players might be Henri Bedie, who pulled his party from the ruling coalition last year, miffed at the refusal of the ruling party to agree to nominating a presidential candidate from his party. It is not clear whether he intends to run for the presidency. Then there is former President Gbagbo, who was acquitted by the International Criminal Court. While he might not run, an endorsement from him might carry significant weight.

Kenya doesn't have elections to concern the market. Yet the latter will likely focus on the parliamentary processes that relate to the interest rate capping provisions of the rate cap. At the time of writing parliament was working through an amendment to the Banking Act. Naturally, the president would rather have it repealed altogether. A repeal would likely have an impact on credit growth and demand for paper in the T-bill and bond markets.

FX strategy: keeping our core EGP exposure

At the time of writing the AOA and GHS had depreciated by an annualised 30% and 18% respectively over the past 4-m, while the EGP and MZN appreciated by 13% and 15% respectively in annualised terms over the same period.

The USD/AOA move is clearly policy-determined. It's hard to see how far it could go, and more importantly, what would arrest it. Policymakers have indicated their determination to open the AOA fixed income market to foreign investors. There is still no certainty regarding how long it would take before this happens.

It also seems as if the gap between the official exchange rate and the street rate is not converging. There is no definitive evidence to suggest that the backlog of FX demand has been satisfied. But then, given the USD-linked government bonds that are used as hedging instruments, USD buyers whose outstanding demand has not been satisfied are not incurring losses as a result of the AOA depreciation. Hence, even as the currency loses value, the outstanding demand for USD does not shrink. Instead, the stock of government bonds increases.

Yet, it seems highly probable that the speed at which the pair is rising will dissipate in coming months. The acceleration in the pace of increase of the pair, especially since about early May, does not look durable.

Could the upcoming elections in 2020 be a factor pushing USD/GHS higher? After all, we have encountered many investors who express trepidation at the prospect of an election while the government is without an IMF-funded program. For these investors it is highly probable that the government will increase the budget deficit meaningfully next year as the government tries to secure the election.

Well, if that is the case, then such trepidation has not translated into a notable reduction in exposure to GHS bonds. The Central Securities Depository indicates that foreigners were holders of GHS28.58bn in GHS bonds in Jul, not far from the GHS28.87bn in Mar that is the peak thus far this year. The actual peak was GHS29.22bn in Apr 18. From this, it is not so clear that foreign investors are selling down their holdings of GHS bonds.

This trend strongly suggests that in aggregate foreigner investors are not reinvesting coupons, repatriating them instead. Given the high coupon rates, coupon payments are probably substantial. If one assumes an average 18% coupon rate on bonds held by foreigners, then annual coupon payments would be close to GHS5.0bn.

Arguably, the BOP is in a sufficiently strong position that the BOG can provide FX supply to the market, thereby helping to stabilise the exchange rate for an extended period. It is in the government's interest to restrain the pace of depreciation of the GHS. Doing so might help to anchor inflation expectations, and ultimately help to prevent persistent depreciation of the GHS.

USD/ZMW has been mostly around 13.00 since late-Jun, after shooting up from nearly 12 in late -Mar to nearly 14.00 in mid-May. It is hard to see any fundamental developments that would make this stability around the 13.00 level durable. If anything, the decline in the volume of copper exports suggests some underlying weakness in the BOP that would lead to further upward pressure on the pair.

The government continues to service its external debt. This is one reason there has been so much pressure on FX reserve, which have dropped so much that import coverage is less than 2-m at present. Drought conditions in parts of the country may exacerbate the pressure. Food production has been constrained, as has hydro electricity generation. This might prompt imports to supplement inadequate domestic supply. There have already been indications that ZESCO, the electricity utility, will import power from Eskom, the South African utility. Clearly, that would increase the country's FX requirements.

One of the reasons we did not enter a trade even though USD/ZMW spiked between Apr and May is that we didn't have much conviction that BOP fundamentals would

improve. Ultimately, an improvement in the BOP would require a tighter fiscal policy stance. Perhaps even external support, whether it be for the drought, could help provide assistance to the BOP.

The depreciation of the KES of roughly an annualised 8% might not appear to be much. As we have pointed out in other research, there is a seasonal tendency for the KES to depreciate during Q4 of any year due to increased demand for FX on account of dividend payments, among other things. However, it typically recovers in Q1, helped along by increased flower sales.

Incidentally, the last time the KES depreciated by near 8% annualised pace in a 4-m period was in Q4:18. It staged a recovery in Q1:19, appreciating by close to an annualised 5% pace by the end of Mar. So, there might be an opportunity for a tactical trade at some point over the next 2 – 3 months.

Even though in the 4-m to early May the MZN depreciated at close to a 13% annualised pace, low implied yields on NDFs kept us from taking a position. We were certainly convinced that the increase in the pair up to that point would not prove to be enduring.

So, what do we do now that the MZN has appreciated at more than a 15% annualised pace in the past 4-m? Well, we're still not inclined to do anything. Implied yields on NDFs are even lower now than they were in early May.

There is a case to be made that perhaps the prospective improvement in the BOP, combined with prudent monetary policy management, justifies some exposure to the MZN. Even though headline inflation has been 5.0% y/y or lower since the beginning of 2018, the central bank's MPC has been resolute in keeping a fairly tight policy stance. The real policy rate is the highest of the countries in our coverage.

The announcement of the final investment decision by Anadarko on its gas project is one impetus for the probable improvement in the country's BOP. This announcement seems to have bolstered confidence in the local market, as could be expected. Of course, looking forward to the commencement of natural gas exports, the structural transformation of the economy will support the MZN on a multi-year basis.

The elections in Oct are an obvious risk event. While we expect the elections, and the aftermath, to be peaceful, there is always a chance of some noise around it. But the fact that the opposition RENAMO party and the government signed a peace agreement is a positive step. There has also, reportedly, been progress made in integrating RENAMO's fighters into the army.

We have maintained exposure to the EGP since May 17 without interruptions. Of course, at the time we entered the trade we believed that the CBE would truly let the EGP float. Under that scenario, we expected USD/EGP to eventually fall below 16.00.

It is possible that the latter might transpire in the next 12 – 18 months. So, we have no intentions of relinquishing our exposure to the EGP in that time. While there has been a fair amount of volatility in portfolio flows over the past 18-m, it seems as if inflows will turn out to filter through into EGP strength. The first time that holdings of EGP T-bills by foreigners increased over USD20.0bn equivalent in Apr 18; USD/EGP was not too far away from 18.00, having barely moved over the preceding 12-m.

Foreign portfolio holdings of EGP T-bills fell dramatically last year, especially in H2:18 and bottomed out in Dec. The resurgence since then has been associated with appreciation of the EGP. It seems as if the decline in inflation has given further impetus for foreign portfolio inflows into the EGP bond market. This is adding further support to the EGP.

We see no reason to relinquish our exposure to the NGN either in the near term. We have also had long-running exposure to the NGN beginning in late 2016, although there have been breaks. The CBN tends to fine-tune NGN liquidity conditions, which tends to generate a fair bit of volatility in foreign portfolio flows. The sequence goes something like this: after a prolonged period of stability in the FX market, the CBN allows NGN liquidity to build up in the system. Such liquidity build-up then pushes yields, whether they be T-bill yields or those on OMO bills, lower. As yields decline foreign portfolio investors take profit on their NGN positions and exit the market, increasing FX demand. The latter then prompts the CBN to intervene in the FX market, exerting downward pressure on FX reserves. Eventually the CBN will tighten conditions again, leading to an increase in yields and a resurgence of foreign portfolio inflows.

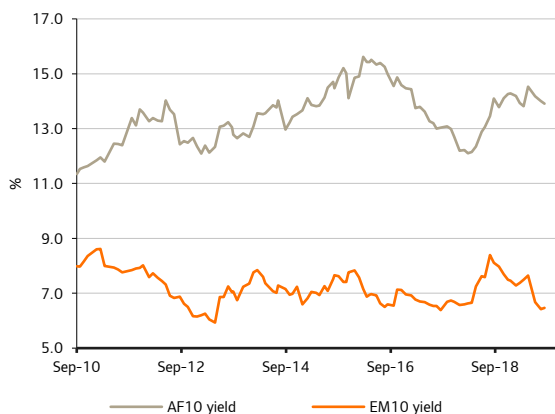
In the past 2 – 3 months we were in the high-liquidity, portfolio-outflow phase of this cycle. It is likely that the CBN will tighten liquidity up over the next 2 – 3 months to bolster FX reserves. Naturally, this would open up interesting re-entry points into the NGN carry trade.

As is always the case, the key risk to this trade is the trajectory of oil prices. While we do not doubt that the CBN would defend the NGN, a sharp and prolonged drop in oil prices, say to less than USD45.0/bbl, would create some policy challenges that might prompt the CBN to let USD/NGN rise in the IEFX window.

Fixed income strategy: focus on East African duration

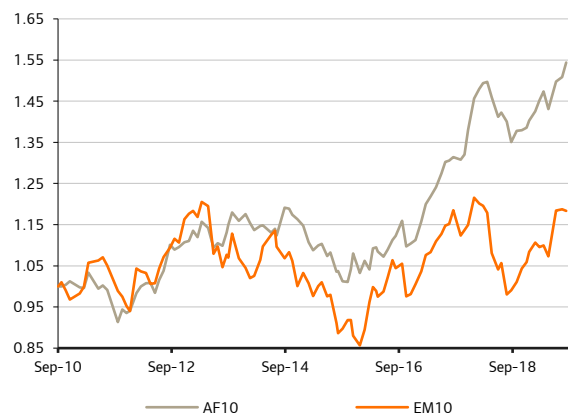
The case for Ugandan duration is quite strong. We often refer to 15% as a yield level that provides some comfort when investing in African local currency bonds. Not many currencies frequently depreciate at over a 15% annualised pace over a 3-y investment horizon. Instead, most currencies typically remain stable for many months before depreciating sharply on account of some BOP shock. After appropriate policy intervention, the currency typically resumes its stability.

Figure 7: EM10 versus AF10 average 10-y bond yield



Source: Bloomberg; Standard Bank Research

Figure 8: EM10 versus AF10 average 10-y bond return



Source: Bloomberg; Standard Bank Research

Where does the UGX fit into all of this? Well, persistent depreciation of the UGX in excess of a 15% annualised pace is quite rare. In any 3-y investment horizon since 2004 the UGX has depreciated at more than a 15% annualised pace in less than 2% of the time. However, 10-y UGX-denominated bonds are yielding less than 15.0%. But the 14.25% pre-tax yield seems sufficiently attractive at this point. As Figure 7 illustrates, this yield is at the higher end of the yields available on the most tradeable markets in our coverage.

Another factor that enhances the attraction of UGX duration is the low inflation rate, providing an extremely high real rate in the context of the markets in our coverage. The roughly 12% real10-y yield for UGX duration is second only to the Zambian real 10-y

yield. Core inflation has been close to the bottom of the BOU's target range, with hardly any indication that it will rise markedly anytime soon. Food inflation is well contained, and the currency has been relatively stable, thereby removing any concerns about potential passthrough of currency depreciation to inflation.

Given this, it would be reasonable to judge that the bias is for the BOU's MPC to cut the policy rate in the near term rather than raise it. Yet, the committee seems to believe that inflation will rise closer to the upper end of the target range in the medium term, perhaps prompting it to adopt a cautionary stance. Specifically, in the statement the committee released following the Aug policy meeting, the committee indicated that it expected core inflation to rise to a peak of 6.4% y/y in Q4:20 driven by stronger domestic demand. It also seemed to believe the bias for inflation to be to the upside.

Even if the committee is correct in its forecast, a nearly 6.5% inflation rate would provide an *ex-ante* real 10-y yield of close to 7.75%. This would still be in the upper end of the range of real yields in the markets in our coverage.

Higher budgeted domestic borrowing is something of a concern, potentially exerting some upward pressure on bond yields. But the likelihood of this increased borrowing shifting yields materially higher, say taking the 10-y yield back above 16%, seems somewhat low.

As we have already argued, there is a strong likelihood that seasonal factor will conspire to weaken the KES further during Q4:19. However, this will likely be reversed in Q1:20. Rather than expressing this view via either the NDFs or T-bills, we would rather express it via a tactical duration trade. However, we are not ready to commit to the trade just yet.

There could be some volatility in KES bond yields over the next few months. Just to be clear, this has nothing to do with either the direction of monetary policy changes or the trajectory of inflation. Core inflation, as has been consistently communicated by the CBK's MPC that indicates that inflation excluding food and fuel is below 5.0% y/y, is well contained. A spurt in food inflation has dissipated, leaving headline inflation still well within the target range. Additionally, thanks to a broadly stable currency, despite the recent depreciation, there doesn't appear to be latent inflation pressures that would arise from passthrough of KES depreciation to inflation. Hence, it is all the more likely that the MPC will keep its policy stance unchanged too.

Instead, it is the probable repeal of the interest rate cap that is at issue, and the impact thereof on the yield curve. As already argued, while it is hard to handicap this outcome, it seems more probable that the cap will be amended such that it is less restrictive. The ramifications of this could be to persuade banks to expand credit, thereby reducing demand for T-bills and bonds. This shift in demand could exert some upward pressure on bond yields.

Despite our frustration with fiscal policy management, we have retained our exposure to Zambian duration. Yields are quite elevated, having been in excess of 20% in the primary auction since the end of Dec 18. In fact, BOZ data indicates that the average bond yield rate in the 2-y to Dec 18 was about 19.3%.

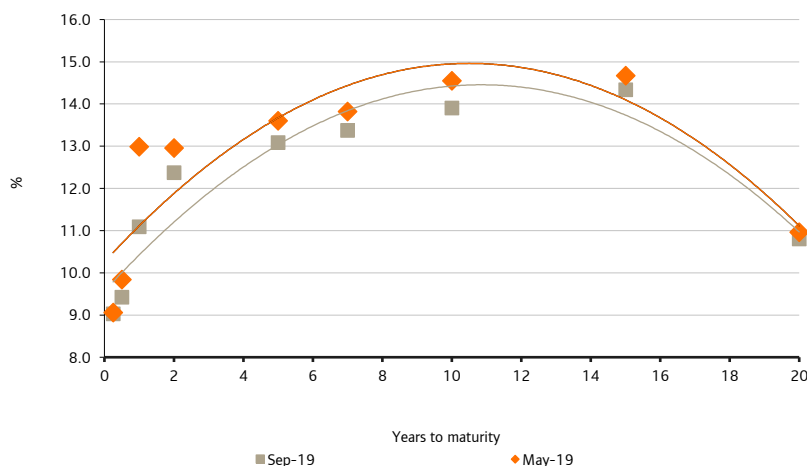
Such high bond yields are bound to affect fiscal policy in a fundamental way. There is a strong likelihood that interest expenditure will absorb an ever rising proportion of revenues, and account for a bigger share of total spending. Barring a fiscal adjustment this scenario could undermine overall macroeconomic stability.

This might be the year that the government finally delivers on the fiscal consolidation to which it has committed itself. We acknowledge, though, that the various shocks to have hit the economy, particularly the drought, could make fiscal consolidation hard to

effect. The government’s budget for FY2019/20 and the medium-term expenditure framework will provide some useful guidance in this respect.

We still favour EGP duration. The Egyptian disinflation that we have been looking for has finally transpired, taking both headline and core inflation into single digits. It seems probable that inflation will stay there on a multi-month basis. The MPC of the CBE will deliver more rate cuts over the coming 6 – 9 months, perhaps returning its policy rates to single digits by mid-2020. There is scope for bond yields to decline further during this period.

Figure 9: AF10 yield curve simple yield average



Source: Bloomberg; Standard Bank Research

It’s hard to see what the impetus for much lower yields in Ghana and Nigeria will be. Hence, our duration exposure in those markets needs a careful review. As we have pointed out before, our favourite trades are recovery trades. Neither Ghana nor Nigeria can be characterised as such. Indeed, the GHS duration position is the antithesis of a recovery trade. We have held the position since late 2016. At the time, it seemed reasonable to believe that an improving BOP and ongoing disinflation would slow the pace of depreciation of the GHS while also leading to lower government bond yields.

The currency drag on this trade has been far too high. While inflation is low, resulting in very high real yields, the third-largest in the tradable markets in our coverage universe, we don’t see impetus for much lower yields. A year ago, we surmised that perhaps the ideal strategy would be to actively trade these bonds, buying them when yields rise well above 20%, perhaps close to 22%, and sell them at yields in the high teens. Well, there hasn’t been much chance to do that.

Earlier we alluded to an NGN liquidity cycle that the CBN has encouraged to develop in the past 2-y or so. Perhaps we should look to actively trade the bonds, taking advantage of these liquidity swings.

African Eurobonds: spread compression ahead

African Eurobonds have outperformed the broader EM, as measured by the EMBI Global Index, as the table on page 2 indicates. Incidentally, African Eurobonds outperformed local currency bonds too, returning over 16% at the time of writing, compared with just over 13% for local currency bonds as measured by our Africa 8 index.

It hasn’t been straightforward, with gyrations in global risk sentiment due to the trade war not leaving African Eurobonds unscathed. Earlier in the year, African Eurobonds were swept up in the bullish run in risk assets that followed the decision by the Fed to pause. But when the trade war’s so-called truce was over, sentiment deteriorated,

undermining risk assets like African Eurobonds. Lately, easing by the Fed has added impetus to risk assets, with African Eurobonds dragged along as well. This will likely last for a few months.

To be sure, increased confidence that the Fed will lower its policy rates seems to have removed anxiety about economic growth from the market. Hence, US Treasury yields have increased, with the market also seemingly reducing the magnitude of rate cuts that it is pricing the Fed to make. With that increase in base rates, spreads have compressed since mid-Aug. Yet, interestingly, African sovereign spreads are little changed from their levels in mid-May.

We still believe that the improvement in Egypt's macroeconomic performance warrants an overweight position, one of our core overweight positions. The government's determination to arrest the debt is indubitable. In all likelihood it will target primary surpluses, perhaps of at least 2% of GDP, in the coming 3 – 5 years. We are likely to see the economy continue to record solid economic growth above 5.0% y/y on a multi-year basis. Even though the major credit rating agencies have upgraded the country's credit rating, there is a chance of more upgrades in the next 2-y.

Senegal is another core overweight. Despite election uncertainty now out of the way, Senegalese bonds have underperformed, especially against Côte d'Ivoire and Kenya. We suspect that the latter was playing catchup. Hence, it is likely that Senegal will outperform again.

With tensions between the US and China thawing in recent weeks, we have taken a decision to tactically increase our exposure to oil sovereigns, specifically Gabon and Nigeria. Gabon has underperformed the other oil sovereigns, something we believe will not be enduring.

We have recently chosen to increase our exposure to long duration bonds. One motivation for switching to longer duration bonds is that the spread between these and shorter duration bonds is close to historical highs. Take the spread between the Egypt '47s and '23s. At the time of writing it was nearly 2 standard deviations away from the mean. Similarly, the spread between the Senegal '48s and '21s was nearly 1.9 standard deviations away from the mean. Notably, over the past month or so, this spread has stopped widening. There is a chance that it might even compress on a multi-week basis.

Hedging CNY exposure

Trade consummated between Africa and China is still predominantly conducted in USD. Yet, for importers, it is often cheaper to hedge CNY exposure than to hedge USD exposure. Standard Bank offers forwards that allow African importers to hedge CNY exposure.

Indicative CNY forward prices

| | Historical prices | | | | Forward prices | | |
|---------|-------------------|--------|--------|--------|----------------|--------|--------|
| | -12m | -6m | -3m | spot | +3m | +6m | +12m |
| CNY/BWP | 1.54 | 1.60 | 1.55 | 1.54 | 1.54 | 1.54 | 1.53 |
| CNY/GHS | 0.71 | 0.77 | 0.79 | 0.78 | 0.80 | 0.83 | 0.88 |
| CNY/KES | 14.67 | 15.01 | 14.91 | 14.70 | 14.78 | 14.87 | 15.05 |
| CNY/MUR | 5.00 | 5.20 | 5.19 | 5.10 | 5.09 | 5.08 | 5.06 |
| CNY/ZAR | 2.06 | 2.16 | 2.05 | 2.07 | 2.09 | 2.11 | 2.15 |
| CNY/UGX | 555.87 | 553.44 | 538.10 | 518.86 | 525.44 | 534.17 | 557.96 |

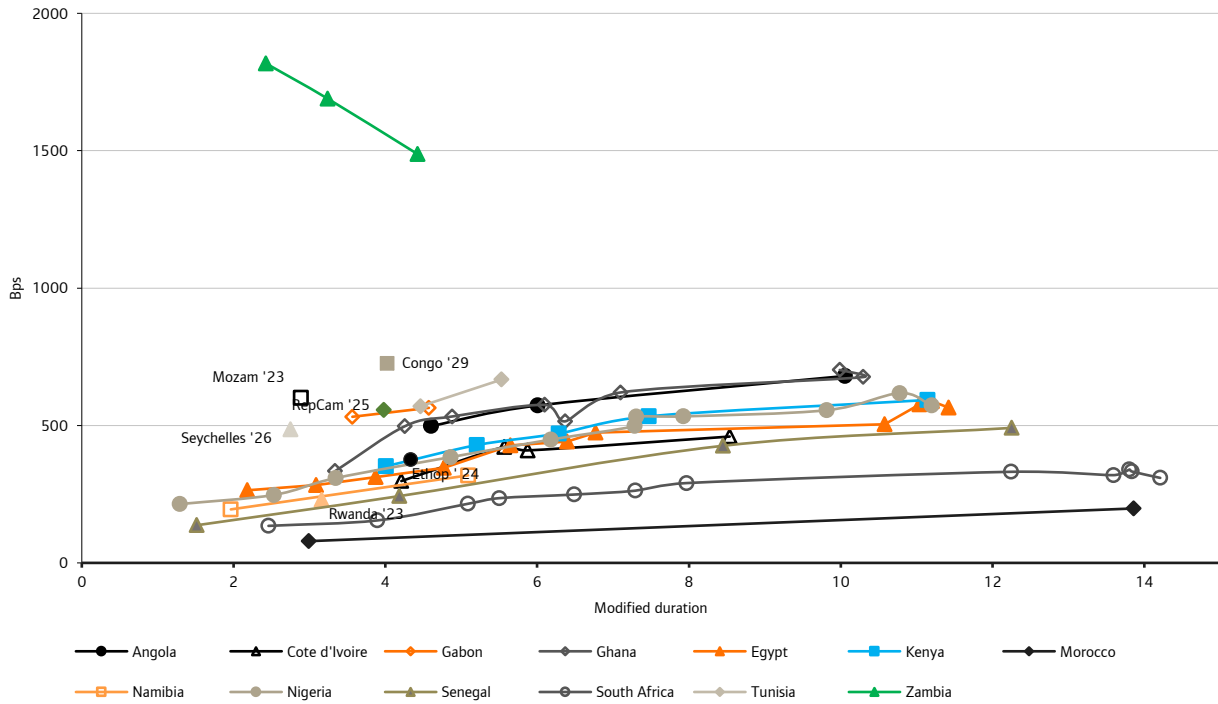
Source: Bloomberg Standard Bank Research

African Eurobonds

| Name | Moody's/Fitch | Mid Price | Mod Dur | Yield, % | Spread, bps | | Spread change, bps | | | Total Return, % | | |
|-------------------------------|---------------|-----------|---------|----------|-------------|----------|--------------------|------|--------|-----------------|------|--------|
| | | | | | Over UST | Z-Spread | 1 wk | YTD | 12mths | 1 wk | YTD | 12mths |
| ANGOL 9.5% 12-NOV-2025 | B3/B | 113.754 | 4.6 | 6.73 | 498 | 504 | -15 | -92 | 35 | -0.6 | 14.2 | 11.3 |
| ANGOL 8.25% 09-MAY-2028 | B3/ | 104.527 | 6.0 | 7.53 | 573 | 580 | -14 | -80 | 52 | -0.8 | 16.6 | 12.1 |
| ANGOL 9.375% 08-MAY-2048 | B3/ | 106.809 | 10.1 | 8.72 | 680 | 685 | -14 | -54 | 65 | -1.5 | 21.0 | 13.5 |
| REPCAM 9.5% 19-NOV-2025 | /B | 109.246 | 4.0 | 7.31 | 556 | 562 | -22 | -98 | -47 | -0.1 | 13.7 | 15.6 |
| REPCON 3% 30-JUN-2029 | /CCC | 88.046 | 4.0 | 9.01 | 726 | 728 | -9 | -167 | -142 | -0.7 | 18.0 | 21.6 |
| EGYPT 6.125% 31-JAN-2022 | B2/B+ | 103.816 | 2.2 | 4.40 | 264 | 264 | -11 | -164 | -103 | -0.2 | 9.9 | 11.3 |
| EGYPT 5.577% 21-FEB-2023 | B2u/B+ | 103.138 | 3.1 | 4.58 | 283 | 287 | -15 | -171 | -99 | -0.3 | 12.7 | 13.5 |
| EGYPT 6.2004% 01-MAR-2024 | B2/B+ | 105.283 | 3.9 | 4.87 | 312 | 318 | -16 | | | -0.4 | | |
| EGYPT 5.875% 11-JUN-2025 | B2/B+ | 103.348 | 4.8 | 5.19 | 346 | 351 | -16 | -164 | -67 | -0.5 | 18.0 | 16.3 |
| EGYPT 7.5% 31-JAN-2027 | B2/B+ | 108.435 | 5.6 | 6.06 | 427 | 435 | -11 | -140 | -32 | -0.9 | 18.5 | 16.1 |
| EGYPT 6.588% 21-FEB-2028 | B2u/B+ | 102.384 | 6.4 | 6.22 | 442 | 449 | -14 | -124 | -20 | -0.9 | 19.4 | 16.6 |
| EGYPT 7.6003% 01-MAR-2029 | B2/B+ | 107.280 | 6.8 | 6.55 | 474 | 481 | -9 | | | -1.3 | | |
| EGYPT 6.875% 30-APR-2040 | B2/B+ | 98.904 | 10.6 | 6.99 | 504 | 512 | -19 | -110 | -15 | -1.2 | 27.8 | 21.6 |
| EGYPT 8.5% 31-JAN-2047 | B2/B+ | 108.676 | 11.0 | 7.73 | 576 | 585 | -16 | -99 | 9 | -1.6 | 25.9 | 19.2 |
| EGYPT 8.7002% 01-MAR-2049 | B2/B+ | 109.621 | 11.2 | 7.86 | 588 | 598 | -16 | | | -1.6 | | |
| EGYPT 7.903% 21-FEB-2048 | B2u/B+ | 103.151 | 11.4 | 7.63 | 565 | 575 | -13 | -89 | 13 | -1.9 | 25.3 | 18.8 |
| ETHIOP 6.625% 11-DEC-2024 | B1/B | 105.014 | 4.3 | 5.51 | 376 | 382 | -26 | -119 | -34 | -0.1 | 14.3 | 13.7 |
| GABON 6.375% 12-DEC-2024 | /B | 97.529 | 3.6 | 7.06 | 532 | 537 | -37 | -113 | 33 | 0.4 | 13.5 | 10.9 |
| GABON 6.95% 16-JUN-2025 | Caa1/B | 97.962 | 4.6 | 7.39 | 564 | 570 | -37 | -89 | 59 | 0.5 | 14.5 | 10.7 |
| GHANA 7.875% 07-AUG-2023 | B3/B | 109.714 | 3.3 | 5.09 | 334 | 339 | -21 | -254 | -45 | -0.2 | 17.1 | 12.1 |
| GHANA 8.125% 18-JAN-2026 | B3/B | 106.158 | 4.3 | 6.73 | 498 | 504 | -15 | -155 | 41 | -0.5 | 16.4 | 10.7 |
| GHANA 7.875% 26-MAR-2027 | B3/B | 102.902 | 4.9 | 7.08 | 533 | 538 | -7 | | | -0.9 | | |
| GHANA 7.625% 16-MAY-2029 | B3/B | 100.433 | 6.1 | 7.55 | 575 | 582 | -16 | -91 | 98 | -0.7 | 17.6 | 8.8 |
| GHANA 10.75% 14-OCT-2030 | B1/BB- | 127.120 | 6.4 | 6.95 | 515 | 520 | -21 | -103 | 47 | -0.4 | 18.5 | 12.0 |
| GHANA 8.125% 26-MAR-2032 | B3/B | 99.790 | 7.1 | 8.02 | 620 | 625 | -20 | | | -0.6 | | |
| GHANA 8.627% 16-JUN-2049 | B3/B | 99.255 | 10.3 | 8.69 | 676 | 683 | -17 | -47 | 97 | -1.4 | 20.4 | 9.8 |
| GHANA 8.95% 26-MAR-2051 | B3/B | 100.115 | 10.0 | 8.94 | 702 | 707 | -16 | | | -1.3 | | |
| IVYCST 5.375% 23-JUL-2024 | Ba3/B+ | 102.801 | 4.2 | 4.72 | 298 | 304 | -24 | -172 | -62 | -0.2 | 15.9 | 14.3 |
| IVYCST 2.5% 31-DEC-2032 | /B+ | 98.577 | 5.6 | 6.00 | 422 | 425 | -2 | -108 | -4 | -1.3 | 16.2 | 13.6 |
| IVYCST 6.375% 03-MAR-2028 | Ba3/B+ | 102.875 | 5.9 | 5.89 | 409 | 418 | -18 | -137 | -41 | -0.5 | 18.9 | 17.0 |
| IVYCST 6.125% 15-JUN-2033 | Ba3/B+ | 97.020 | 8.5 | 6.47 | 460 | 467 | -25 | -91 | 0 | -0.4 | 21.6 | 17.4 |
| KENINT 6.875% 24-JUN-2024 | /NR | 106.711 | 4.0 | 5.26 | 352 | 358 | -5 | -218 | -117 | -0.9 | 18.4 | 17.3 |
| KENINT 7% 22-MAY-2027 | B2u/B+ | 105.076 | 5.2 | 6.06 | 429 | 436 | -5 | | | -1.2 | | |
| KENINT 7.25% 28-FEB-2028 | B2u/B+ | 104.724 | 6.3 | 6.51 | 471 | 479 | -3 | -162 | -68 | -1.5 | 22.1 | 20.4 |
| KENINT 8% 22-MAY-2032 | B2u/B+ | 106.417 | 7.5 | 7.18 | 534 | 539 | -6 | | | -1.7 | | |
| KENINT 8.25% 28-FEB-2048 | B2u/B+ | 103.936 | 11.1 | 7.90 | 593 | 602 | -12 | -110 | -36 | -2.0 | 27.5 | 25.1 |
| MOROC 4.25% 11-DEC-2022 | /BBB- | 105.264 | 3.0 | 2.54 | 79 | 83 | -25 | -88 | -53 | 0.0 | 7.9 | 9.2 |
| MOROC 5.5% 11-DEC-2042 | /BBB- | 120.919 | 13.9 | 4.10 | 198 | 220 | -28 | -50 | -3 | -0.6 | 21.6 | 18.7 |
| MOZAM 10.5% 18-JAN-2023 | Caa3u/ | 104.533 | 2.9 | 7.75 | 600 | 604 | -22 | -381 | -569 | 0.0 | 11.2 | 24.4 |
| REPnam 5.5% 03-NOV-2021 | Ba1/BB+ | 103.554 | 2.0 | 3.74 | 195 | 196 | -10 | -135 | -23 | -0.2 | 8.2 | 7.5 |
| REPnam 5.25% 29-OCT-2025 | Ba1/BB+ | 101.569 | 5.1 | 4.95 | 318 | 326 | -27 | -138 | -21 | 0.0 | 16.8 | 13.5 |
| NGERIA 6.75% 28-JAN-2021 | /B+ | 103.585 | 1.3 | 4.02 | 214 | 209 | -9 | -140 | -49 | 0.0 | 6.8 | 7.3 |
| NGERIA 5.625% 27-JUN-2022 | B2/B+ | 103.586 | 2.5 | 4.24 | 247 | 250 | -21 | -161 | -62 | -0.1 | 10.8 | 10.4 |
| NGERIA 6.375% 12-JUL-2023 | /B+ | 105.311 | 3.3 | 4.83 | 309 | 314 | -14 | -179 | -36 | -0.4 | 13.9 | 11.5 |
| NGERIA 7.625% 21-NOV-2025 | B2/B+ | 110.439 | 4.9 | 5.60 | 385 | 391 | -16 | -183 | | -0.6 | 19.5 | |
| NGERIA 6.5% 28-NOV-2027 | B2/B+ | 101.303 | 6.2 | 6.29 | 449 | 457 | -19 | -123 | 0 | -0.6 | 19.3 | 14.8 |
| NGERIA 7.143% 23-FEB-2030 | B2/B+ | 102.447 | 7.3 | 6.81 | 498 | 505 | -14 | -111 | 15 | -1.1 | 20.6 | 15.2 |
| NGERIA 8.747% 21-JAN-2031 | B2/B+ | 112.243 | 7.3 | 7.15 | 532 | 538 | -14 | -114 | | -1.0 | 21.4 | |
| NGERIA 7.875% 16-FEB-2032 | B2/B+ | 105.500 | 7.9 | 7.20 | 533 | 540 | -15 | -105 | 38 | -1.2 | 21.4 | 13.9 |
| NGERIA 7.696% 23-FEB-2038 | B2/B+ | 102.291 | 9.8 | 7.47 | 556 | 561 | -12 | -80 | 32 | -1.7 | 22.4 | 15.9 |
| NGERIA 9.248% 21-JAN-2049 | B2/B+ | 112.403 | 10.8 | 8.13 | 618 | 626 | -16 | -61 | | -1.4 | 21.9 | |
| NGERIA 7.625% 28-NOV-2047 | B2/B+ | 99.068 | 11.2 | 7.71 | 573 | 582 | -13 | -70 | 39 | -1.8 | 23.5 | 15.5 |
| RWANDA 6.625% 02-MAY-2023 | /B+ | 108.632 | 3.2 | 4.04 | 229 | 234 | -20 | -198 | -125 | -0.2 | 13.8 | 14.2 |
| SENEGL 8.75% 13-MAY-2021 | Ba3/ | 108.816 | 1.5 | 3.23 | 137 | 137 | -19 | -200 | -104 | 0.0 | 8.2 | 8.2 |
| SENEGL 6.25% 30-JUL-2024 | Ba3/ | 109.050 | 4.2 | 4.18 | 243 | 249 | -20 | -186 | -92 | -0.3 | 16.1 | 15.2 |
| SENEGL 6.25% 23-MAY-2033 | Ba3/ | 101.010 | 8.4 | 6.13 | 426 | 433 | -20 | -99 | -14 | -0.8 | 22.0 | 18.4 |
| SENEGL 6.75% 13-MAR-2048 | Ba3/ | 97.726 | 12.3 | 6.94 | 491 | 505 | -20 | -65 | -8 | -1.5 | 22.8 | 21.4 |
| SEYCHE 3% 01-JAN-2026 | /BB | 103.928 | 2.8 | 6.61 | 485 | 489 | -45 | -28 | 35 | 0.6 | 8.0 | 9.2 |
| SOAF 5.875% 30-MAY-2022 | Baa3/BB+ | 107.125 | 2.5 | 3.11 | 135 | 137 | -29 | -82 | -70 | 0.1 | 7.1 | 9.4 |
| SOAF 4.665% 17-JAN-2024 | Baa3/BB+ | 105.500 | 3.9 | 3.29 | 155 | 161 | -21 | -109 | -97 | -0.3 | 11.0 | 14.0 |
| SOAF 5.875% 16-SEP-2025 | Baa3/BB+ | 110.375 | 5.1 | 3.92 | 215 | 223 | -16 | -90 | -70 | -0.7 | 12.7 | 15.6 |
| SOAF 4.875% 14-APR-2026 | Baa3/BB+ | 104.193 | 5.5 | 4.14 | 236 | 245 | -13 | -68 | -63 | -0.9 | 12.5 | 16.3 |
| SOAF 4.85% 27-SEP-2027 | Baa3/BB+ | 103.752 | 6.5 | 4.29 | 249 | 258 | -11 | -72 | -46 | -1.1 | 14.6 | 16.9 |
| SOAF 4.3% 12-OCT-2028 | Baa3/BB+ | 98.830 | 7.3 | 4.46 | 263 | 272 | -14 | -46 | -32 | -1.1 | 14.0 | 17.1 |
| SOAF 5.875% 22-JUN-2030 | Baa3/BB+ | 109.188 | 8.0 | 4.77 | 290 | 300 | -14 | -55 | -34 | -1.2 | 15.9 | 18.2 |
| SOAF 6.25% 08-MAR-2041 | Baa3/BB+ | 111.732 | 12.2 | 5.34 | 332 | 345 | -13 | -38 | -17 | -2.2 | 18.7 | 21.5 |
| SOAF 5.375% 24-JUL-2044 | Baa3/BB+ | 101.250 | 13.6 | 5.28 | 319 | 338 | -20 | -35 | -19 | -1.6 | 19.2 | 22.3 |
| SOAF 6.3% 22-JUN-2048 | Baa3/BB+ | 111.375 | 13.8 | 5.51 | 340 | 361 | -16 | -48 | -31 | -2.1 | 21.8 | 24.0 |
| SOAF 5.65% 27-SEP-2047 | Baa3/BB+ | 103.000 | 13.8 | 5.44 | 333 | 354 | -14 | -34 | -18 | -2.3 | 19.6 | 22.0 |
| SOAF 5% 12-OCT-2046 | Baa3/BB+ | 96.631 | 14.2 | 5.23 | 309 | 333 | -12 | -22 | -11 | -2.6 | 18.0 | 21.0 |
| BTUN 5.75% 30-JAN-2025 | B2/B+ | 92.613 | 4.5 | 7.44 | 570 | 576 | -21 | -92 | 5 | -0.3 | 14.3 | 13.8 |
| BTUN 8.25% 19-SEP-2027 | B2/WD | 98.820 | 5.5 | 8.46 | 667 | 674 | -28 | 38 | 233 | 0.1 | 8.7 | 1.0 |
| ZAMBIN 5.375% 20-SEP-2022 | /CCC | 68.202 | 2.4 | 19.93 | 1,818 | 1,821 | 7 | 513 | 498 | -0.4 | 0.1 | 6.8 |
| ZAMBIN 8.5% 14-APR-2024 | /CCC | 69.629 | 3.2 | 18.65 | 1,690 | 1,696 | 3 | 385 | 295 | -0.7 | 0.9 | 11.4 |
| ZAMBIN 8.97% 30-JUL-2027 | /CCC | 69.439 | 4.4 | 16.62 | 1,488 | 1,491 | -2 | 292 | 205 | -0.9 | 1.3 | 12.2 |
| SB Africa Eurobond (incl. SA) | B+ | | 6.9 | 6.77 | 496 | 498 | -16 | -76 | 16 | -0.9 | 16.6 | 15.1 |
| SB Africa Eurobond (excl. SA) | B+ | | 6.6 | 7.15 | 535 | 536 | -17 | -83 | 26 | -0.8 | 16.8 | 14.6 |

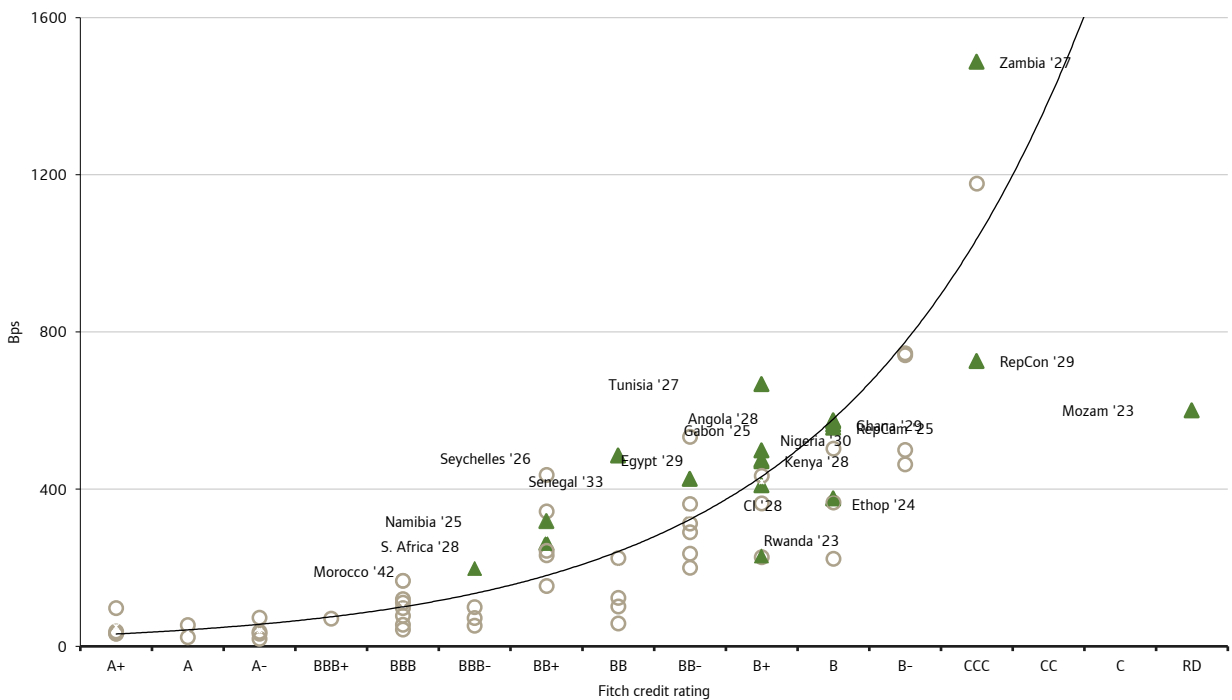
Source: Bloomberg; Standard Bank Research

Figure 10: African sovereign USD bonds (spread over US Treasuries versus modified duration)



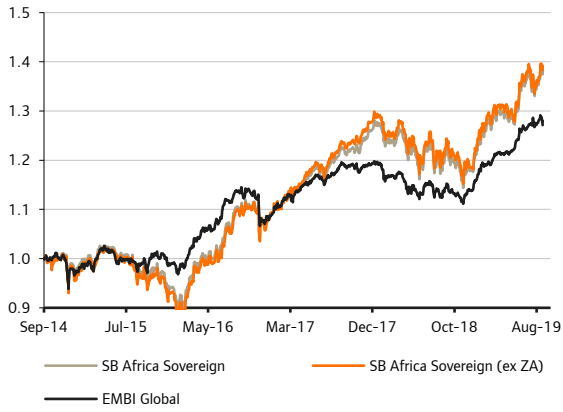
Source: Bloomberg; Standard Bank Research

Figure 11: African and broader EM bonds (spread over US Treasuries versus credit rating)



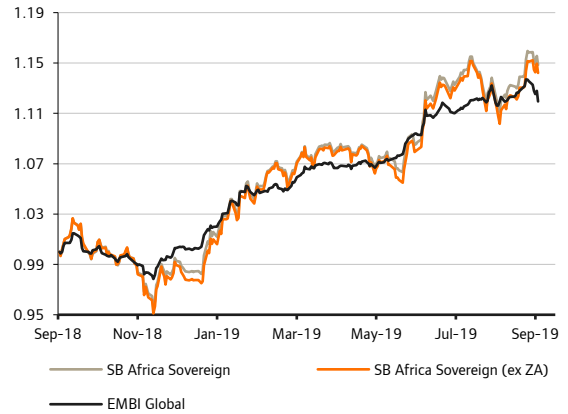
Source: Bloomberg; Standard Bank Research

Figure 12: African Eurobonds (5-y performance)



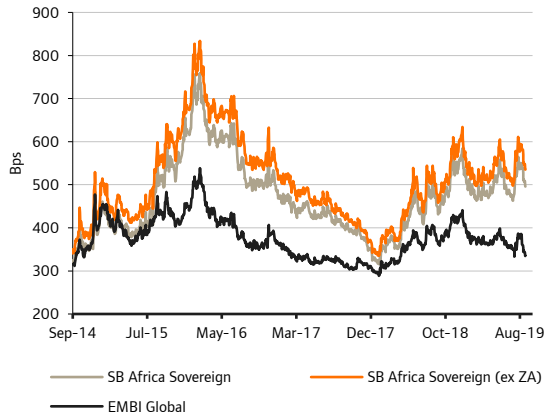
Source: Bloomberg; Standard Bank Research

Figure 13: African Eurobonds (1-y performance)



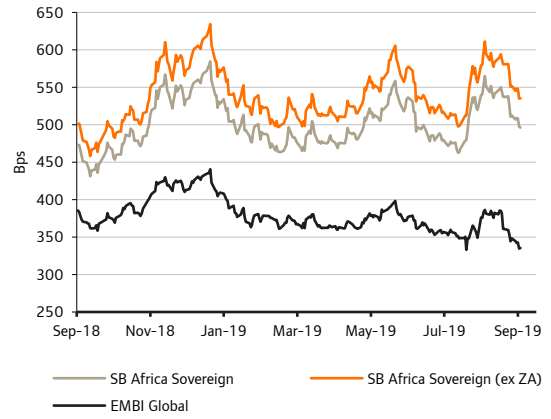
Source: Bloomberg; Standard Bank Research

Figure 14: African Eurobonds spread over UST (5-y)



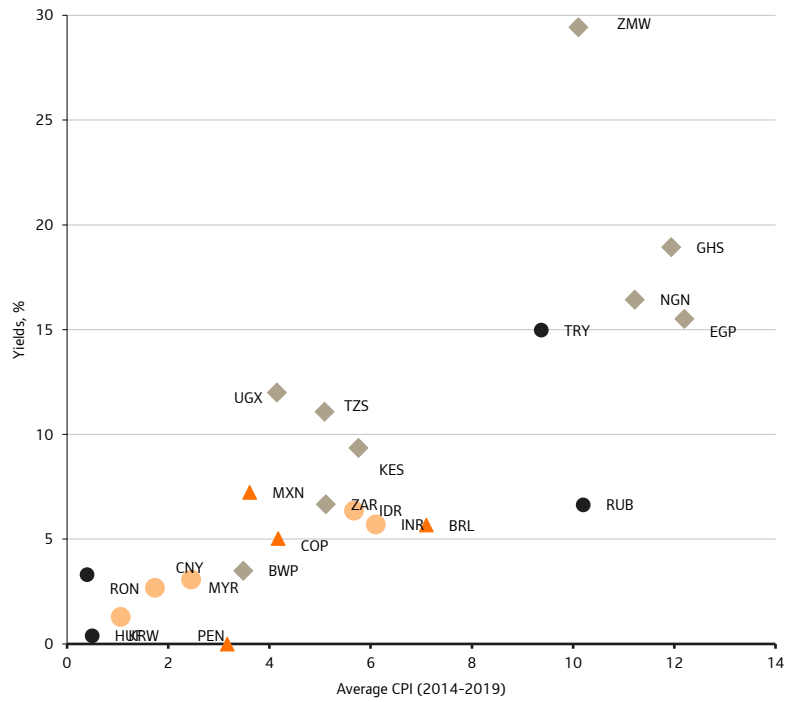
Source: Bloomberg; Standard Bank Research

Figure 15: African Eurobonds spread over UST (1-y)



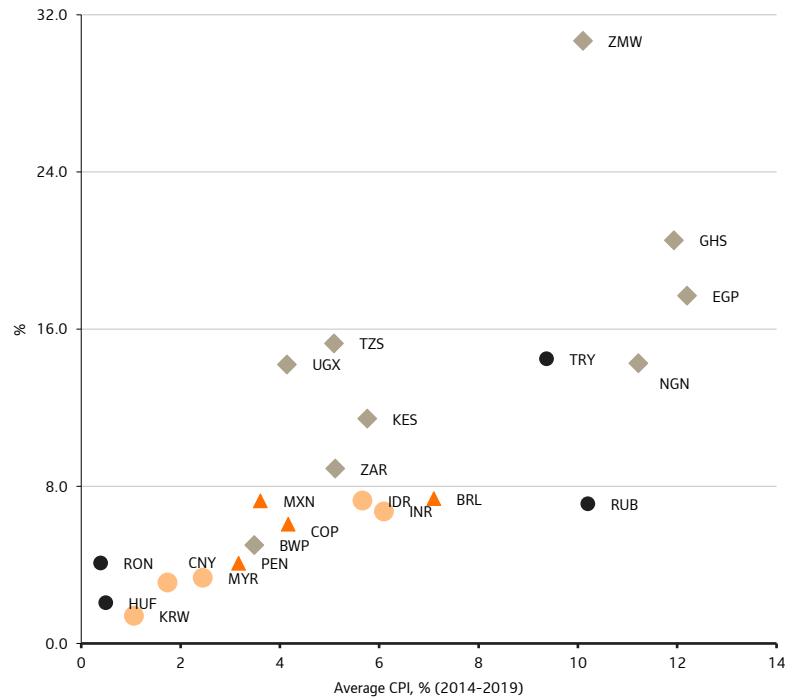
Source: Bloomberg; Standard Bank Research

Figure 16: Local 2-year bonds vs. past and forecast inflation



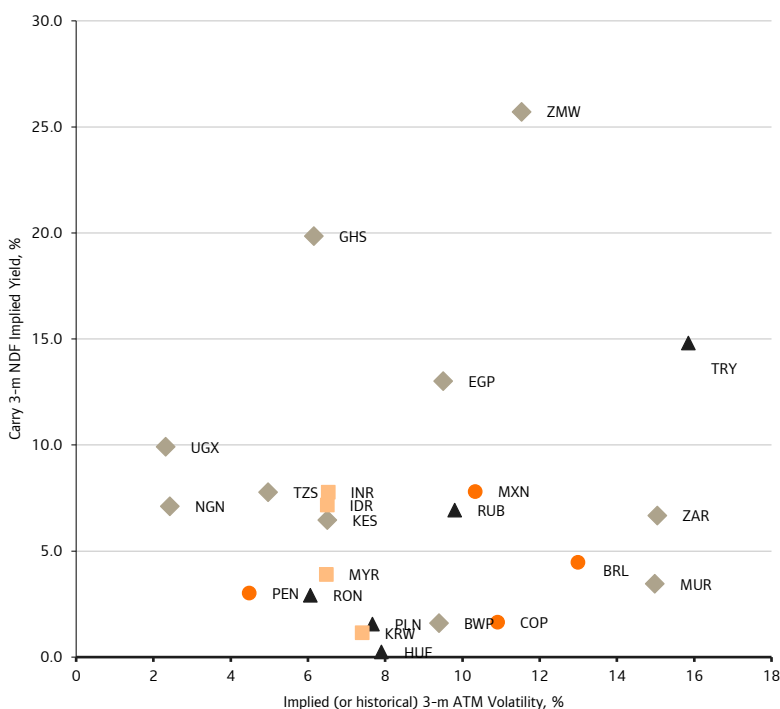
Source: Bloomberg; Standard Bank Research

Figure 17: Local 10-year bonds vs. past and forecast inflation



Source: Bloomberg; Standard Bank Research

Figure 18: NDF carry rates vs. implied vols



Source: Bloomberg; Standard Bank Research

Table of expected returns over the next 3 months

| Country | Tenor | Current yield | Yield, % | | | Total return, % | | |
|----------|-------|---------------|----------|---------|-------------|-----------------|---------|-------------|
| | | | Slide | Forward | SB forecast | Slide | Forward | SB forecast |
| Botswana | 2Y | 3.16 | 3.03 | 3.32 | 3.50 | 1.4 | 0.1 | 0.2 |
| | 5Y | 4.19 | 4.13 | 4.32 | 4.00 | 1.5 | 0.1 | 1.9 |
| | 10Y | 4.88 | 4.86 | 4.97 | 5.20 | 1.4 | 0.5 | -1.3 |
| Egypt | 2Y | 14.96 | 15.13 | 14.81 | 14.80 | 3.5 | 4.0 | 4.0 |
| | 5Y | 14.35 | 14.39 | 14.24 | 14.25 | 3.5 | 4.0 | 3.9 |
| | 10Y | 14.67 | 14.70 | 14.75 | 14.55 | 3.5 | 3.3 | 4.3 |
| Ghana | 2Y | 18.02 | 17.85 | 18.65 | 18.70 | 4.8 | 3.6 | 3.5 |
| | 5Y | 18.69 | 18.70 | 19.08 | 19.20 | 4.6 | 3.5 | 3.1 |
| | 10Y | 18.91 | 18.93 | 19.19 | 19.60 | 4.6 | 3.5 | 1.8 |
| Kenya | 2Y | 9.03 | 8.79 | 9.32 | 9.8 | 2.6 | 1.8 | 1.0 |
| | 5Y | 10.72 | 10.63 | 10.97 | 10.4 | 3.0 | 1.7 | 3.8 |
| | 10Y | 11.76 | 11.74 | 11.97 | 11.8 | 3.1 | 1.8 | 2.7 |
| Nigeria | 2Y | 15.65 | 15.73 | 16.39 | 14.85 | 3.8 | 2.8 | 5.1 |
| | 5Y | 14.67 | 14.73 | 14.95 | 14.52 | 3.5 | 2.7 | 4.2 |
| | 10Y | 14.26 | 14.28 | 14.42 | 14.63 | 3.5 | 2.8 | 1.7 |
| Tanzania | 2Y | 9.43 | 8.91 | 10.19 | 11.3 | 3.2 | 1.1 | -0.7 |
| | 5Y | 13.38 | 13.18 | 14.00 | 13 | 4.0 | 1.2 | 4.6 |
| | 10Y | 15.50 | 15.45 | 16.03 | 15.4 | 4.1 | 1.3 | 4.4 |
| Uganda | 2Y | 12.27 | 12.08 | 12.67 | 12.4 | 3.4 | 2.4 | 2.9 |
| | 5Y | 13.55 | 13.51 | 13.82 | 14.4 | 3.5 | 2.5 | 0.5 |
| | 10Y | 14.08 | 14.08 | 14.29 | 14.7 | 3.5 | 2.5 | 0.3 |
| Zambia | 2Y | 30.81 | 30.31 | 33.51 | 31.20 | 8.3 | 4.2 | 7.2 |
| | 5Y | 31.16 | 31.29 | 32.72 | 31.60 | 7.5 | 4.1 | 6.8 |
| | 10Y | 30.51 | 30.58 | 31.69 | 30.80 | 7.4 | 4.2 | 6.8 |

Source: Bloomberg; Standard Bank Research

Notes: Yield curve scenarios: "Slide" = the bond yields slide along the unchanged yield curve, "Forward" = the yield curve evolves according to its embedded forward rates, "SB forecasts" = Standard Bank Research expectations

Asset class expected performance summary (3 months)

| | FX | Rates | Credit |
|----------------------------------|----|-------|--------|
| Angola | ↑ | ↓ | ↓ |
| Botswana | ↑ | ↓ | ↓ |
| Côte d'Ivoire | ↑ | → | → |
| Democratic Republic of the Congo | ↓ | ↓ | ↓ |
| Egypt | ↑ | ↑ | ↑ |
| Ethiopia | ↓ | → | → |
| Ghana | → | ↑ | ↑ |
| Kenya | ↓ | → | → |
| Malawi | → | ↓ | ↓ |
| Mauritius | ↓ | → | ↓ |
| Morocco | ↑ | → | ↑ |
| Mozambique | → | ↓ | ↓ |
| Namibia | ↑ | ↑ | ↑ |
| Nigeria | ↑ | ↓ | ↑ |
| Rwanda | → | ↓ | → |
| Senegal | ↑ | → | ↑ |
| Tanzania | → | ↓ | → |
| Tunisia | → | ↓ | ↓ |
| Uganda | ↓ | ↓ | ↓ |
| Zambia | ↓ | → | ↓ |

Source: Bloomberg; Standard Bank Research

Recommended trades: performance

Open Trades

| Positions | Entry date | Entry yield, % | Entry FX | Latest yield, % | Latest FX | Total return, % | |
|--|------------|----------------|----------|-----------------|-----------|-----------------|---------|
| | | | | | | Since inception | 1-month |
| Ghana: buy GHGB '20 | 31-Oct-16 | 20.00 | 3.99 | 18.15 | 5.46 | 18.9 | 0.4 |
| Zambia: buy ZAMGB '26 | 18-Nov-16 | 24.50 | 9.81 | 30.50 | 13.15 | 21.4 | 1.8 |
| Egypt: buy Egypt '27 | 23-Nov-17 | 15.88 | 17.69 | 14.66 | 16.35 | 44.9 | 6.5 |
| BEAC: sell USD/XAF 2-y NDF | 24-Nov-17 | 4.25 | 550.62 | 1.82 | 593.04 | 0.4 | -0.8 |
| Nigeria: buy NIGB '27 | 27-Feb-18 | 13.70 | 361.00 | 14.19 | 362.92 | 16.9 | 0.8 |
| Nigeria: buy 12-m T-bill | 01-Nov-18 | 16.82 | 363.00 | 12.32 | 362.92 | 13.3 | 1.0 |
| Egypt: buy 12-m T-bill | 06-Nov-18 | 19.78 | 17.92 | 16.61 | 16.35 | 26.6 | 3.0 |
| Angola: sell USD/AOA 12-m NDF | 09-Jan-19 | 18.77 | 311.62 | 15.68 | 369.37 | -4.5 | -1.3 |
| Total portfolio internal rate of return since prev. AMR (15-May-2019) | | | | | | 5.2 | |

Source: Bloomberg; Standard Bank Research

Malawi: poised for stronger growth

GDP growth: improved agricultural production

We expect GDP growth of 4.5% y/y for 2019, but there is a chance that elections-related unrest may still weigh on the growth outlook this year.

Higher growth over the next 2-y is predicated on the strong performance of the agricultural sector which contributes around 28% to GDP. Over 2019, official projections see the agricultural sector expanding by 3.9% y/y, compared with 0.9% y/y in 2018. This is predicated on more favourable rainfall conditions, which bodes well for improved crop and livestock production. The Ministry of Agriculture forecasts maize production at 3.4m tons over the 2019 harvest season, which is 25.7% y/y higher. This represents a surplus of 300k tons, also boding well for restocking national grain reserves.

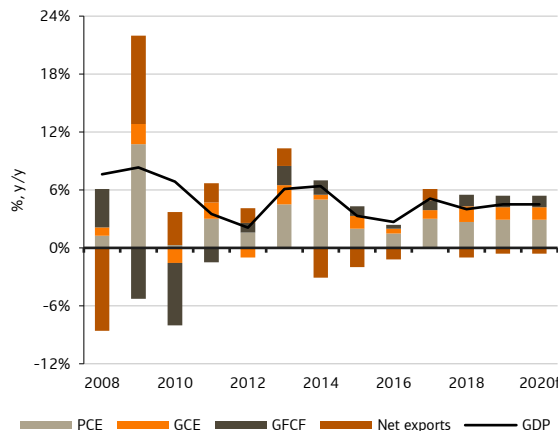
It is likely that stronger growth in the in the agricultural sector will spill over into the wider economy. The manufacturing sector is expected to benefit from higher agricultural production boosting the availability of raw materials. Official estimates put growth of the manufacturing sector at 4.6% y/y this year, compared with 3.6% y/y last year. Domestic electricity supply improvements would also support more growth in this sector.

A better agricultural season is also consistent with higher disposable incomes, which should see wholesale and retail trade expand by 4.5% y/y this year, higher than 4.1% y/y last year, but lower than 5.0% y/y in 2017. Over the last 3-y, real incomes have also benefitted from lower and stable inflation. After averaging 21.8% in 2016, inflation averaged 12.3% y/y and 9.2% y/y in 2017 and 2018 respectively.

Ahead of the elections in May, the transportation and storage sector appeared to have received a boost. Growth for this sector is projected at 5.5% y/y, higher than 4.9% y/y in 2018. Growth projections were upgraded due to increased travel across the country during the campaign period.

The FY2018/19 budget, which had a definite developmental focus, supported growth of the construction sector. Over 2018 the construction sector grew by 4.5% y/y, and official forecasts see it rising to 5.0% y/y in 2019. Higher growth this year is expected due to a carryover of construction projects in both the public and private sector. Ongoing projects include the dual carriage way in Lilongwe and Blantyre, the Kamuzu International Airport expansion, and a number of secondary schools across the country. A large portion of the developmental budget is funded by foreign grants. As relations with the wider donor community normalised over the past few years, this has allowed the government to increase recurrent and capital expenditure, which has seen GCE contribute positively to GDP growth.

Composition of GDP by demand



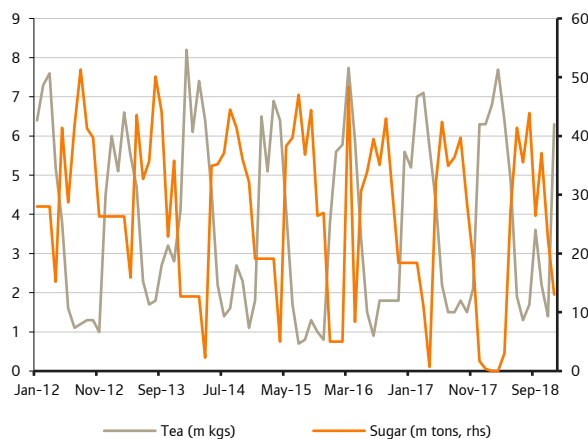
Source: Reserve Bank of Malawi; National Statistical Office; Standard Bank Research

GDP composition by sector

| | 2015 | 2016 | 2017f | 2018f | 2019f |
|---|-------|-------|-------|-------|-------|
| Agriculture, forestry & fishing | 28.6 | 27.9 | 28.1 | 27.7 | 27.2 |
| Mining & quarrying | 0.9 | 0.9 | 0.9 | 0.8 | 0.8 |
| Manufacturing | 9.6 | 9.4 | 9.3 | 9.4 | 9.0 |
| Electricity gas & water supply | 1.3 | 1.2 | 1.2 | 1.2 | 1.2 |
| Construction | 2.8 | 2.8 | 2.8 | 2.8 | 2.9 |
| Wholesale and retail trade | 16.0 | 15.9 | 16.0 | 15.8 | 16.2 |
| Transport and storage | 2.7 | 2.7 | 2.7 | 2.8 | 2.8 |
| Accommodation and food | 1.9 | 2.0 | 2.0 | 1.9 | 2.0 |
| Information and communication | 4.3 | 4.4 | 4.3 | 4.3 | 4.6 |
| Financial and insurance services | 5.2 | 5.2 | 5.5 | 5.4 | 5.4 |
| Real estate activities | 7.7 | 7.7 | 7.5 | 7.3 | 7.4 |
| Professional & support services | 0.3 | 0.3 | 0.3 | 0.3 | 0.3 |
| Public administration & defence | 2.0 | 2.1 | 2.0 | 2.1 | 2.2 |
| Education | 2.6 | 2.7 | 2.7 | 2.8 | 3.0 |
| Health and social work activities | 2.6 | 2.7 | 2.8 | 2.7 | 2.9 |
| Other services | 4.9 | 5.1 | 5.0 | 5.0 | 5.0 |
| Plus: Taxes less Subsidies on products | 6.7 | 6.7 | 6.7 | 6.8 | 6.8 |
| GDP | 100.1 | 100.0 | 100.0 | 100.0 | 100.0 |

Source: Reserve Bank of Malawi, National Statistical Office, Standard Bank Research

Tea and sugar production



Source: Reserve Bank of Malawi

Quarterly indicators

| | Q1:18 | Q2:18 | Q3:18 | Q4:18 | Q1:19 | Q2:19e | Q3:19f | Q4:19f | Q1:20f | Q2:20f | Q3:20f | Q4:20f |
|--------------------------|-------|-------|-------|-------|-------|--------|--------|--------|--------|--------|--------|--------|
| GDP (% y/y) pa | 4.0 | 4.0 | 4.0 | 4.0 | 4.5 | 4.5 | 4.5 | 4.5 | 4.5 | 4.5 | 4.5 | 4.5 |
| CPI (% y/y) pa | 8.6 | 9.1 | 9.3 | 9.9 | 8.7 | 9.0 | 9.4 | 9.5 | 9.5 | 8.9 | 7.6 | 7.4 |
| M2 (% y/y) pa | 19.6 | 19.0 | 12.5 | 12.7 | 14.2 | 14.9 | 15.2 | 15.5 | 15.8 | 16.1 | 16.4 | 16.8 |
| CA/GDP (%) pa | -14.0 | -14.0 | -14.0 | -14.0 | -12.5 | -12.5 | -12.5 | -12.5 | -11.3 | -11.3 | -11.3 | -11.3 |
| FX reserves (USD bn) pe | 0.67 | 0.73 | 0.75 | 0.73 | 0.68 | 0.70 | 0.72 | 0.70 | 0.66 | 0.78 | 0.77 | 0.69 |
| Import cover (months) pe | 3.2 | 3.5 | 3.6 | 3.5 | 3.3 | 3.4 | 3.5 | 3.4 | 3.2 | 3.8 | 3.7 | 3.3 |
| 3-m rate (%) pe | 14.0 | 14.5 | 14.5 | 11.5 | 11.5 | 11.3 | 11.1 | 10.9 | 10.9 | 10.9 | 10.7 | 10.0 |
| 1-y rate (%) pe | 15.0 | 15.5 | 15.5 | 15.0 | 15.0 | 14.8 | 13.8 | 13.4 | 13.3 | 13.3 | 13.1 | 12.4 |
| USD/MWK pe | 726 | 726 | 721 | 735 | 731 | 768 | 730 | 739 | 747 | 754 | 763 | 772 |

Source: Reserve Bank of Malawi; National Statistical Office; Ministry of Finance; International Monetary Fund; Bloomberg; Standard Bank Research

Notes: pe – period end; pa – period average

Political risks: election results contested

Tripartite elections were held in May. The presidential elections were closely contested. Election results revealed that less than 159,000 votes separated the winner, President Peter Mutharika, from runner-up Lazarus Chakwera who is leader of the MCP. Mutharika secured 38.57% of the vote, while Chakwera secured 35.41%.

Subsequently, opposition parties have mounted a number of legal challenges to the election results. Both the MCP and the United Transformation Movement, led by former vice president, Saulos Chilima, also formally petitioned the High Court, challenging the results of the presidential elections. Depending on the court's ruling, a fresh set of elections could be held in Malawi. Some estimate that the court may take up to 4-m to rule on this matter. Separately, a large number of petitions have been filed with the High Court challenging the results of the parliamentary and local government elections.

The protracted legal challenge sustains downside risk to GDP growth outlook this year. Since the election results were released at the end of May, the opposition managed to mobilise its support base and stage protests in parts of the country. Some businesses even closed in anticipation of these protests. With demonstrations becoming increasingly violent, election-related protests were banned temporarily.

Despite the ongoing legal dispute of the election results, President Mutharika has been inaugurated and has formed his cabinet.

Election results (2019)

| Presidential elections | Party | % of votes |
|------------------------------------|-------|------------|
| Peter Mutharika | DPP | 38.57 |
| Lazarus Chakwera | MCP | 35.41 |
| Saulos Chilima | UTM | 20.24 |
| Atupele Muluzi | UDF | 4.68 |
| Parliamentary elections | Seats | |
| Democratic Progressive Party (DPP) | 62 | |
| Malawi Congress Party (MCP) | 55 | |
| United Democratic Front (UDF) | 10 | |
| People's Party (PP) | 5 | |
| Others - mainly independents | 61 | |
| Total | 193 | |

Source: Malawi Electoral Commission

Balance of payments: pressure on trade inflows

The C/A deficit should remain elevated above 10% of GDP. By 2020, we see the C/A deficit moderating to around 11% of GDP. Malawi's Extended Credit Facility (ECF) with the IMF should underpin further external rebalancing. Over this period, FX reserves are expected to remain around USD700m, which corresponds with import cover above 3-m. FX reserves have not fallen below USD696 in the 6-m to Jun.

There is a chance that lower levels of trade inflows could widen the trade account balance over this year, which sustains an upside risk to our current account forecast. Although tobacco production is forecast to rise by 2.0% y/y, reaching 205.5m kg over the 2018/19 marketing season, seasonal trade flows from tobacco sales are likely to fall due to lower tobacco prices at auctions. According to the RBM, the tobacco crop is expected to generate USD303.5m, compared with USD337.5m over the 2017/18 marketing season. The tobacco marketing season usually runs between Apr and Sep. During the last quarter of the year, seasonal trade flows from other key exports such as sugar and tea sales also tend to taper off. In Q1:19, tea production rose almost 2.0% y/y to reach 21.2m kg, which generated USD4.8m. Again, lower soft commodity prices reduced trade inflows from this cash crop.

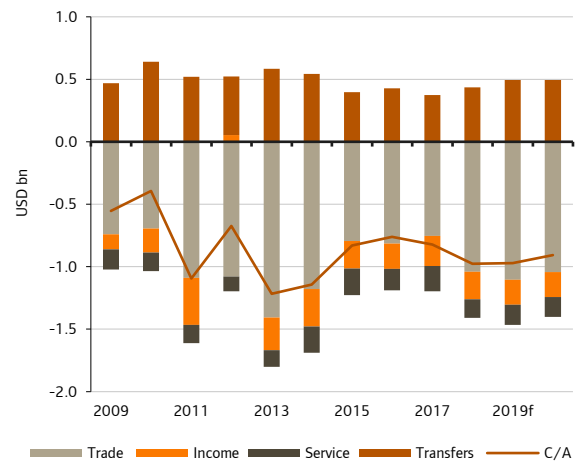
FDI, combined with government borrowing, is forecast to account for the bulk of capital flows over the medium term. Malawi's good performance on the existing IMF programme bodes well for maintaining good relations between the government and development partners. Previously, this relationship was badly damaged by fiscal mismanagement scandals. Improved oversight and controls in the disbursement of funds in place mitigate the risk of a reoccurrence.

FX outlook: steadier, with an upward bias

After having traded between 720 – 735 for close to 3-y, between May and Jul, the USD/MWK moved higher peaking at close to 780. But we see the MWK recovering over the remainder of the year, ending this year around 740 against the US dollar.

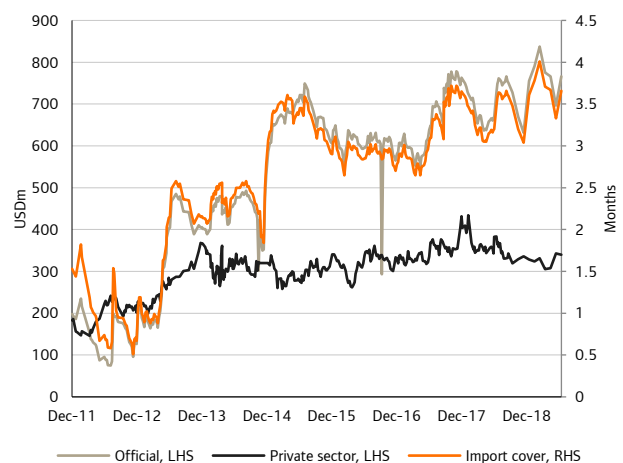
From mid-Jul the currency began to recover as the demand for US dollars eased, allowing the MWK to stage a recovery back to the 720-735 band. Trade inflows from tobacco sales, which begin late-Apr, typically stabilize the currency, but it appears that higher levels of imports due election-related anxiety may have exacerbated market imbalances over this period. The timing of the RBM's second rate cut in May was interesting, as it coincided with the elections later that month. Heightened political tensions, after the election results were released, could have sustained higher levels of demand for USD, which would have added to overall FX market imbalances.

Current account developments



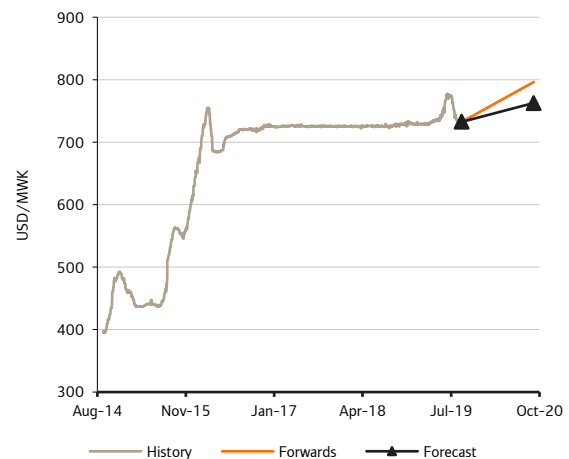
Source: Reserve Bank of Malawi; Standard Bank Research

FX reserves



Source: Reserve Bank of Malawi; Standard Bank Research

USD/MWK: forwards versus forecasts



Source: Bloomberg; Standard Bank Research

Monetary policy: still further easing

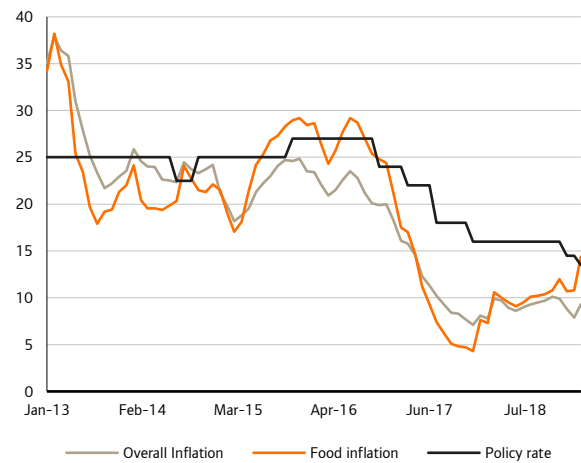
The RBM is likely to ease rates further, possibly even reducing the policy rate by another 100 bps. Although the MPC opted to hold rates unchanged at the Jul MPC, since the start of this year the MPC has reduced the policy rate by 250 bps to 13.5%. The MPC also reduced the liquidity reserve requirement on foreign and local currency deposits by 375 bps and 250 bps to 3.75% and 5.0% respectively. The Lombard rate is set at 40 bps above the policy rate.

Notwithstanding some reversal in recent weeks, since May the trajectory of the exchange rate has not been consistent with the RBM’s expectations. Sure, MWK weakness was probably transitory, having a limited impact on the overall trajectory of inflation in the medium term. However, over the near term it is likely to pass through to inflation. Following the Jul MPC meeting, the RBM revised the forecast for annual inflation for 2019 to 9.0%, from 8.0%.

So far, the passthrough has been limited, which differs from previous episodes of exchange rate weakness. Then again, the passthrough to inflation usually occurs with a lag, so inflation could trend higher over Q3:19. We see inflation averaging 9.0% y/y in 2019. Inflation hovered around 9.0% y/y over Q2:19, with non-food inflation averaging 5.5% y/y. Since the inception of this inflation series in Jan 18, non-food inflation has benefitted from a stable exchange rate, falling to 5.4% y/y in Jun, after peaking at 9.7% y/y in Mar 18. In the 7-m to Jul, fuel prices had not changed since the fuel price reduction in Jan. It is not surprising then that in Jun the transport sub-index, which carries a weight of 8.4% in the CPI basket, moderated further to 6.35% y/y. Over the past few months, it appears that a price stabilization fund cushioned the impact of a weaker exchange rate.

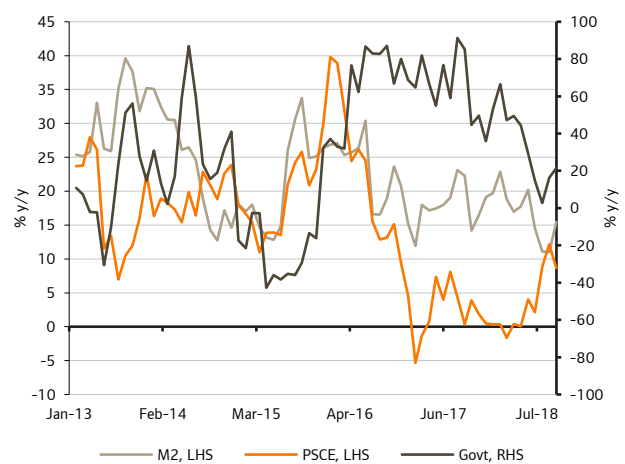
Food inflation remains usually high; it averaged 13.0% y/y over H1:19, compared with 9.0% y/y over the same period last year. Maize prices have remained both unusually high and sticky despite improved production in this season.

Inflation and interest rates



Source: Reserve Bank of Malawi; Standard Bank Research

Monetary statistics

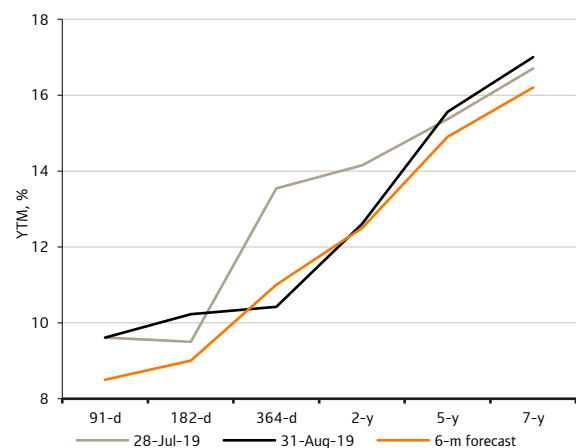


Source: Reserve Bank of Malawi; Standard Bank Research

Yield curve outlook: higher inflation expectations prevent a move lower

Over the next 6-m, there is scope for yields to move lower as the RBM eases monetary policy further. But, there is a chance over the next few months that higher inflation expectations pull yields slightly higher from current levels. Between Jun and Jul, T-bill yields moved higher. It’s likely that expectations of a food shortage, caused by adverse weather conditions in Q1:19, may have kept inflation expectations elevated in Q2:19 too. However, it does not seem that inflation expectations have eased, since it appears that large grain traders, still expecting a domestic food shortage, are stockpiling maize, which is likely to have kept maize prices elevated. The yield curve bull steepened, with yields on the short end declining at a faster rate. Still, real T-bill rates are positive, with inflation at 9.0% y/y in Jun. In the 8-m to Aug, yields on 91-d, 182-d and 364-d T-bills fell by 181 bps, 277 bps and 358 bps respectively.

Changes in the yield curve



Source: Reserve Bank of Malawi; Standard Bank Research

Fiscal policy: FY2019/20, a lower budget deficit

Following the elections in May, the new cabinet was formed in late Jun, which did not allow enough time for preparation of the full budget by Jul. Typically, in Malawi, a fiscal year runs between Jul and Jun in the following year. Instead, this year, the full FY2019/20 budget is was presented in Sep. Budget deficits are expected to moderate in the medium term. Fiscal targets set by the IMF under the ECF programme should underpin further fiscal rebalancing.

With that said, the provisional budget for the 4-m between Jul and Oct forms part of the FY2019/20 budget. The FY2019/20 forecasts total expenditure at MWK1.73trn, with a combination of revenue and grants set at MWK1.57trn. The bulk of recurrent expenditure covers salaries and wages of MWK443m, and debt service payments of MWK244bn. MWK437bn is set aside for development spending, which seems ambitious, as it is forecast 35% y/y higher than the FY2018/19 budget outturn.

Compared with a smaller budget deficit including grants of 2.4% of GDP projected over FY2019/20, the budget deficit climbed to 5.5% of GDP over FY2018/19. This was a function of some revenue underperformance and expenditure overruns on interest payments and disaster relief initiatives after Cyclone Idai.

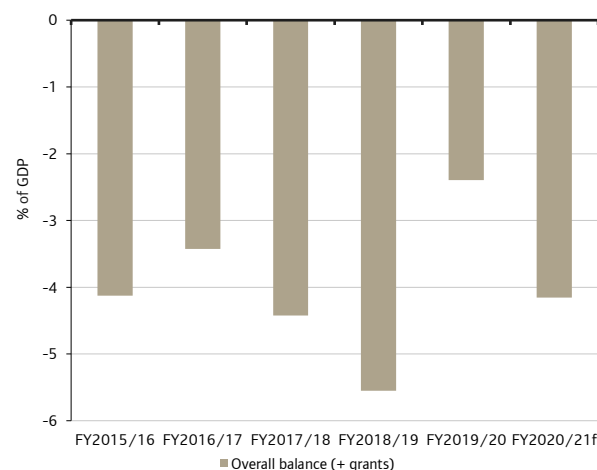
In Mar at the mid-year budget review (MYBR), revenue and grants were revised lower by 29% to MWK1.430trn. It appears that revenue and grants reached MWK1.12trn at the end of FY2018/19, 21% below the revised target. Slower GDP growth of 4% y/y over 2018 could have also been a factor that contributed to domestic revenue underperformance. Another factor is that grants reached MWK115bn, 41% lower than forecast at MYBR. This was largely a function of MKW60bn in budget support not being disbursed. Spending over FY2018/19 reached MWK1.441trn. We suspect that operational challenges may have limited the execution of the capital budget, reducing the absorption rate.

Central government budget

| % of GDP | FY2017/18 | FY2018/19 | FY2019/20 |
|-----------------------------------|-----------|-----------|-----------|
| Total revenue | 21.6 | 19.4 | 24.2 |
| Total expenditure | 26.0 | 25.0 | 26.6 |
| - Recurrent | 19.7 | 20.1 | 19.9 |
| - Development | 5.7 | 4.9 | 6.7 |
| Overall balance (+ grants) | -6.7 | -7.5 | -4.7 |
| Overall balance (- grants) | -4.4 | -5.5 | -2.4 |
| Net domestic borrowing | 3.0 | 1.1 | 1.7 |
| Net foreign borrowing | 1.4 | 4.5 | 0.7 |

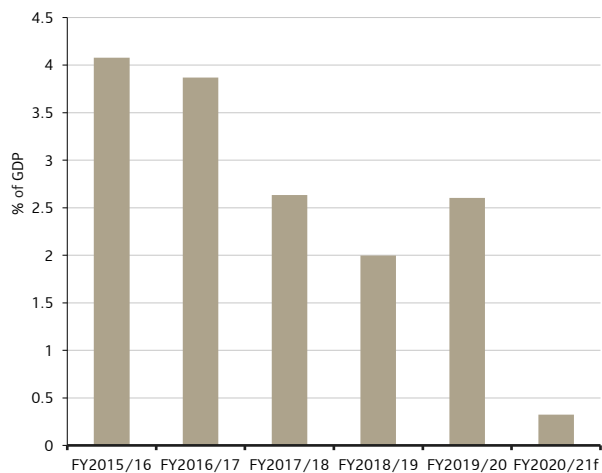
Source: Ministry of Finance

Fiscal deficits



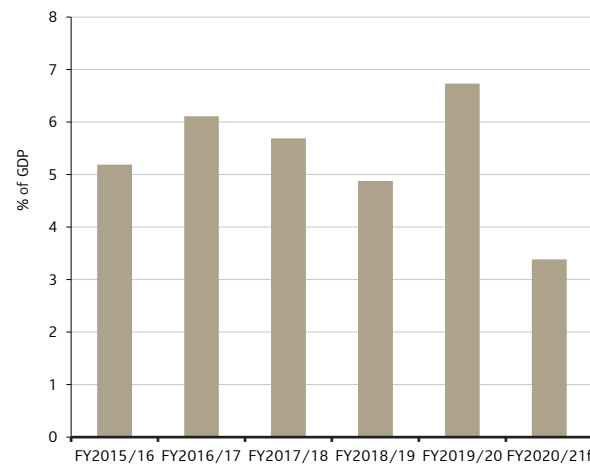
Source: Ministry of Finance; Standard Bank Research

Budget grants



Source: Ministry of Finance; Standard Bank Research

Developmental spending



Source: Ministry of Finance; Standard Bank Research

| Annual indicators | | | | | | | |
|--|----------|----------|----------|----------|----------|----------|----------|
| | 2014 | 2015 | 2016 | 2017 | 2018 | 2019f | 2020f |
| Output | | | | | | | |
| Population (million) | 15.9 | 16.3 | 16.7 | 17.0 | 17.3 | 17.5 | 17.9 |
| Nominal GDP (MWK bn) | 2 534.7 | 3 212.7 | 3 818.5 | 4 482.5 | 5 074.8 | 5 766.6 | 6 506.7 |
| Nominal GDP (USD bn) | 6.0 | 6.1 | 5.4 | 6.2 | 7.0 | 7.8 | 8.6 |
| GDP / capita (USD) | 379.6 | 375.1 | 322.4 | 363.6 | 403.5 | 447.0 | 481.9 |
| Real GDP growth (%) | 6.4 | 3.3 | 2.7 | 5.1 | 4.0 | 4.5 | 4.5 |
| Tobacco auction sales (million kgs) | 185.0 | 193.0 | 194.0 | 158.0 | 202.0 | 205.5 | 203.0 |
| Tea production (million kgs) | 45.8 | 38.4 | 28.0 | 32.0 | 32.0 | 33.0 | 34.5 |
| Central Government Operations | | | | | | | |
| Budget balance (excl. Grants) / GDP (%) | -8.6 | -8.5 | -7.0 | -5.9 | -7.5 | -4.7 | -4.5 |
| Budget balance (incl. Grants) / GDP (%) | -5.4 | -4.7 | -4.4 | -3.0 | -5.5 | -2.4 | -4.2 |
| Domestic debt / GDP (%) | 14.9 | 16.8 | 18.9 | 19.5 | 20.0 | 21.6 | 23.1 |
| External debt / GDP (%) | 33.1 | 37.0 | 33.2 | 33.5 | 35.0 | 34.8 | 36.0 |
| Balance of Payments | | | | | | | |
| Exports (USD m) | 1 509.8 | 1 417.0 | 1 468.6 | 1 569.0 | 1 450.0 | 1 470.0 | 1 620.0 |
| Imports (USD m) | -2 687.6 | -2 211.9 | -2 282.8 | -2 321.6 | -2 490.0 | -2 575.0 | -2 662.6 |
| Trade balance (USD m) | -1 177.8 | -794.9 | -814.2 | -752.6 | -1 040.0 | -1 105.0 | -1 042.6 |
| Current account (USD m) | -1 143.7 | -829.7 | -761.3 | -822.3 | -975.0 | -970.0 | -900.0 |
| - % of GDP | -19.0 | -13.6 | -14.2 | -13.3 | -14.0 | -12.4 | -10.5 |
| Financial account (USD m) | 590.7 | 773.2 | 685.1 | 900.0 | 885.0 | 840.0 | 890.0 |
| - FDI (USD bn) | 603.5 | 292.9 | 329.9 | 367.1 | 450.0 | 460.0 | 490.0 |
| Basic balance / GDP (%) | -9.0 | -8.8 | -8.0 | -7.4 | -7.5 | -6.5 | -4.8 |
| FX reserves (USD m) pe | 589.0 | 638.9 | 606.9 | 759.0 | 730.0 | 700.0 | 690.0 |
| - Import cover (months) pe | 3.1 | 3.1 | 2.9 | 3.4 | 3.5 | 3.4 | 3.2 |
| Sovereign Credit Rating | | | | | | | |
| S&P | nr | nr | nr | nr | nr | nr | nr |
| Moody's | nr | nr | nr | nr | nr | nr | nr |
| Fitch | nr | nr | nr | nr | nr | nr | nr |
| Monetary & Financial Indicators | | | | | | | |
| Consumer inflation (%) pa | 24.7 | 21.8 | 21.8 | 12.3 | 9.2 | 9.1 | 8.3 |
| Consumer inflation (%) pe | 23.7 | 24.7 | 20.0 | 7.1 | 9.9 | 9.2 | 7.9 |
| M2 money supply (% y/y) pa | 21.6 | 21.4 | 22.8 | 18.0 | 15.9 | 14.9 | 15.3 |
| M2 money supply (% y/y) pe | 16.6 | 25.5 | 19.9 | 18.4 | 12.0 | 12.7 | 16.8 |
| Policy interest rate (%) pa | 25.0 | 26.0 | 25.5 | 20.0 | 14.8 | 14.0 | 11.5 |
| Policy interest rate (%) pe | 25.0 | 27.0 | 24.0 | 16.0 | 16.0 | 12.0 | 11.0 |
| 3-m rate (%) pe | 26.9 | 23.6 | 24.0 | 14.5 | 11.5 | 8.0 | 8.0 |
| USD/MWK pa | 420.0 | 525.4 | 711.3 | 725.1 | 727.1 | 737.2 | 755.6 |
| USD/MWK pe | 464.8 | 667.8 | 728.0 | 725.5 | 735.0 | 739.5 | 771.8 |

Source: Reserve Bank of Malawi; National Statistical Office; Ministry of Finance; International Monetary Fund; Bloomberg; Standard Bank Research
Notes: pe – period end; pa – period average; na – not available; nr – not rated

Glossary

For brevity, we frequently use acronyms that refer to specific institutions or economic concepts. For reference, below we spell out these and provide definitions of some economic concepts that they represent.

| | |
|------------------|---|
| 14-d | 14-day, as in 14-d deposit, which denotes 14 day deposit |
| 10-y | 10-year |
| 16 Jan 13 | 16 January 2013 |
| 3-m | 3 months |
| 3m | 3 million, as in USD3m, which denotes 3 million US dollars |
| 3bn | 3 billion, as in UGX3bn, which denotes 3 billion Ugandan shillings |
| 3tr | 3 trillion, as in TZS3.0tr, which denotes 3 trillion Tanzanian shillings |
| AOA | Angola Kwanza |
| BAM | Bank Al Maghrib |
| BCC | Banque Central du Congo (Central Bank of Congo) |
| BCEAO | Banque Central des États de L’Afrique de l’Ouest (Central Bank of West African States) |
| BCT | Banque Central de Tunisie |
| BM | Banco de Moçambique |
| BNA | Banco Nacional de Angola |
| BOB | Bank of Botswana |
| BOG | Bank of Ghana |
| BOM | Bank of Mauritius |
| BON | Bank of Namibia |
| BOP | Balance of payments – a summary position of a country’s financial transactions with the rest of the world. It encompasses all international transactions in goods, services, income, transfers, financial claims and liabilities. |
| BOT | Bank of Tanzania |
| BOU | Bank of Uganda |
| BOZ | Bank of Zambia |
| BR | Bank Rate (Reserve Bank of Malawi) |
| BRVM | Bourse Régionale des Valeurs Mobilières (Regional Securities Exchange) |
| BWP | Botswana Pula |

| | |
|--------------------------|--|
| C/A | Current account balance. This is the sum of the visible trade balance and the net invisible balance of a country. The latter includes net service, income and transfer payments. |
| Capital account | Captures the net change in investment and asset ownership for a nation by netting out a country's inflow and outflow of public and private international investment. |
| CBE | Central Bank of Egypt |
| CBK | Central Bank of Kenya |
| CBR | Central Bank Rate |
| CDF | Congolese Franc |
| CPI | Consumer Price Index – An index that captures the average price of a basket of goods and services representative of the consumption expenditure of households within an economy. |
| Discount rate | Policy rate for Bank of Uganda |
| Disinflation | A decline in the rate of inflation. Here prices are still rising but with a slower momentum. |
| Disposable income | After tax income |
| DM | Developed markets |
| ECB | European Central Bank |
| EGP | Egyptian pound |
| EM | Emerging markets |
| ETB | Ethiopian Birr |
| Eurobond | A bond denominated in a currency other than the home currency of the issuer. |
| Exports | The monetary value of all goods and services produced in a country but consumed abroad. |
| FMDQ | FMDQ OTC Securities Exchange, Nigeria |
| FX | Foreign Exchange |
| FY2016/17 | 2016/17 fiscal year |
| GCE | Government Consumption Expenditure - Government outlays on goods and services that are used for the direct satisfaction of the needs of individuals or groups within the community. This would normally include all non-capital government spending. |
| GDE | Gross domestic expenditure, the market value of all goods and services consumed in a country – both private and public – including imports but excluding exports. This is measured over a period of time – usually a quarter/year. |
| GFCF | Gross Fixed Capital Formation – this is investment spending, the addition to capital stock such as equipment, transportation assets, electricity infrastructure, etc to replace the existing stock of productive capital that is used in the production of goods and services in a given period of time, usually a year/quarter. Normally, the higher the rate of capital, the faster an economy can grow. |
| GDP | Gross Domestic Product – the monetary value of all finished goods and services produced in a country in a specific period, usually a year/quarter. |

| | |
|--------------------------------|--|
| GHS | Ghanaian Cedi |
| H1:16 | First half of 2016 |
| Imports | The monetary value of goods and services produced abroad and consumed locally. |
| Inflation | The rate at which the general level of prices of goods and services are rising. It is usually measured as the percentage change in the consumer price index over a specific period, usually a month/year. |
| Invisible trade balance | The value of exports of services, income and transfers, less imports of same. |
| Jan 16 | January 2016 |
| KBRR | Kenya Bankers' Reference Rate |
| KES | Kenya Shilling |
| KR | Key Rate (Bank Al Maghrib) |
| KRR | Key Repo Rate |
| m/m | Month on month, in reference to a rate of change |
| MAD | Moroccan Dirham |
| MLF | Marginal Lending Facility |
| MOF | Ministry of Finance |
| MPC | Monetary Policy Committee, the committee that makes the decision on policy rates |
| MPR | Monetary Policy Rate |
| MUR | Mauritian Rupee |
| MWK | Malawian Kwacha |
| MZN | Mozambican Metical |
| NAD | Namibian Dollar |
| NBE | National Bank of Ethiopia |
| NBR | National Bank of Rwanda |
| NEER | Nominal Effective Exchange Rate. This is the weighted average rate at which a country's currency exchanges for a basket of currencies, usually trading partner currencies. It is measured in index format. |
| NGN | Nigerian Naira |
| Nominal GDP | The monetary value of all finished goods and services produced in a country in a specific period, usually a year/quarter, measured in current prices. |
| NPL | Non-Performing Loans |

| | |
|------------------------------|---|
| Parity | Refers to the par or nominal value of a debt instrument. This is usually the price at which the said instrument is redeemed on maturity. |
| PCE or HCE | Personal or Household Consumption Expenditure: The monetary value of household purchases of durable goods, non-durable goods, semi durables and services within a given period of time, usually a year/quarter. |
| PR | Policy Rate |
| Prime rate | key lending rate |
| q/q | quarter on quarter, in reference to a rate of change |
| Q1:16 | First quarter of 2016 |
| RBM | Reserve Bank of Malawi |
| Real GDP | The monetary value of all finished goods and services produced in a country in a specific period, usually a year/quarter, measured in constant prices. |
| REER | Real Effective Exchange Rate. This is the weighted average rate at which a country's currency exchanges for a basket of currencies - usually trading partner currencies - while taking into account any changes in relative prices between the host country and its trading partners. It is often measured in index format. |
| RWF | Rwandan Frank |
| SARB | South African Reserve Bank |
| SDF | Standing Deposit Facility (Mozambique) |
| SLF | Standing Lending Facility (Mozambique) |
| T-bill | Treasury bill – A short-dated, government backed security that yields no interest but is issued at a discount over a period of less than one year. |
| TND | Tunisian Dinar |
| Treasury bond | A marketable government debt security with a maturity of a year or longer |
| TZS | Tanzanian Shilling |
| UGX | Uganda Shilling |
| USD | US Dollar |
| VAT | Value Added Tax |
| Visible trade balance | The value of exports of visible goods less imports. |
| WAEMU | West African Economic and Monetary Union, also known as Union Economique et Monetaire Ouest Africaine (UEMOA) |
| XAF | Central African Franc |
| XOF | West African Franc |
| y/y | Year on year, in reference to a rate of change |

| | |
|--------------|---|
| Yield | The return on an investment, usually expressed as a percentage over a period of time, usually a year. |
| YTD | Year to date |
| ZAR | South African Rand |
| ZMW | Zambian Kwacha |

Protection of Personal Information Consent

Standard Bank Group, its subsidiaries and associate business units (including Standard Bank Research) have committed to treat the personal information that it collects as private and confidential and has published a comprehensive privacy statement accessible on this [link](#). Should you wish to withdraw your consent to the processing of your personal information kindly email ResearchCompliance@standardbank.co.za

| | |
|------------------------------|--|
| Client: | means, for the purpose of this section, any natural or juristic person acting through their duly authorised representative(s), who has subscribed to or consented to being subscribed to receiving research Services |
| Personal Information: | means information relating to an identifiable, natural or juristic person, including information relating to race, gender, sex, marital status, nationality, ethnic or social origin, colour, sexual orientation, age, physical or mental health, religion, belief, disability, language, birth, education, identity number, telephone number, email, postal or street address, biometric information and financial, criminal or employment history as well as correspondence sent by the person that is implicitly or explicitly of a private or confidential nature or further correspondence that would reveal the contents of the original correspondence. |
| Process: | means any operation or activity, whether automated or not, concerning Personal Information, including collection, receipt, recording, organisation, collation, storage, updating, modification, retrieval, alteration, consultation, use, dissemination (whether by means of transmission, distribution or making available in any form), merging, linking, blocking, degradation, erasure or destruction |
| Research Reports: | means investment research reports, in relation to the Services, prepared by an independent research analyst, non-independent research analyst or strategist who is part of an investment research team in a stock brokerage, global markets desk or corporate and investment bank environment. |
| Services: | means, <i>inter alia</i> , the provision of the Research Reports and other communications and events with respect to equities, market strategy, companies, industries, commodities and countries and associated sales and trading commentary by Standard Bank Research ("SBR") |

CONSENT FOR PROCESSING PERSONAL INFORMATION

1.1 The Client acknowledges that:

- 1.1.1 Applicable laws may at times require SBR to collect the Client's Personal Information;
- 1.1.2 Personal Information may be collected from public sources;
- 1.1.3 SBR may be unable to fulfil its regulatory obligations and provide Services to the Client without Processing the Client's Personal Information;
- 1.1.4 All Personal Information which the Client provides to SBR is voluntarily provided;
- 1.1.5 SBR shall determine the Services and means of Processing any Personal Information that is provided by the Client;
- 1.1.6 Personal Information may be processed by SBR and/ or, The Standard Bank of South Africa Limited and/or its associated entities or duly authorised third party service providers.
- 1.1.7 The Client consents to SBR processing its Personal Information in order to:
 - 1.1.7.1 create and administer the Client's profile as contemplated by regulation;
 - 1.1.7.2 carry out statistical and other analysis to identify potential markets and trends;
 - 1.1.7.3 develop new products and services; and/or
 - 1.1.7.4 any other purpose SBR reasonably believe is required to fulfil its obligations in accordance with regulation or this agreement.
- 1.1.8 The Client has consented to the Processing of its Personal Information for the purpose of clause 1. 7 above.
- 1.1.9 The Client hereby expressly consents that SBR may disclose to or share its Personal Information with duly authorised third parties, which may be located in the Republic of South Africa or other jurisdictions, where it is necessary in order for SBR to fulfil its obligations in accordance with the regulation and/or this agreement.
- 1.1.10 SBR will require any third-party service providers to whom the Client's Personal Information is provided to agree to SBR's data privacy principles policy and practices in accordance with the prevailing regulations including data privacy laws.

Disclaimer

This material is non-independent research. Non-independent research is a "marketing communication"

This material is "non-independent research". Non-independent research is a "marketing communication" as defined in the UK FCA Handbook. It has not been prepared in accordance with the full legal requirements designed to promote independence of research and is not subject to any prohibition on dealing ahead of the dissemination of investment research.

Additional information with respect to any security referred to herein may be made available on request. This material is for the general information of institutional and market professionals' clients of Standard Bank Group (SBG) only. Recipients who are not market professionals or institutional investor customers of SBG should seek advice of their independent financial advisor prior to taking any investment decision based on this communication or for any necessary explanation of its content. It does not take into account the particular investment objectives, financial situation or needs of individual clients. Before acting on any advice or recommendations in this material, clients should consider whether it is suitable for their particular circumstances and, if necessary, seek professional advice. The information, tools and material presented in this marketing communication are provided to you for information purposes only and are not to be used or considered as an offer or the solicitation of an offer to sell or to buy or subscribe for securities or other financial instruments, nor shall it, or the fact of its distribution, form the basis of, or be relied upon in connection with, any contract relating to such action. This material is based on information that we consider reliable, but SBG does not warrant or represent (expressly or impliedly) that it is accurate, complete, not misleading or as to its fitness for the purpose intended and it should not be relied upon as such. The information and opinions contained in this document were produced by SBG as per the date stated and may be subject to change without prior notification. Opinions expressed are our current opinions as of the date appearing on this material only. We endeavour to update the material in this report on a timely basis, but regulatory compliance or other reasons may prevent us from doing so.

SBG or its employees may from time to time have long or short positions in securities, warrants, futures, options, derivatives or other financial instruments referred to in this material. Where SBG designates NON- INDEPENDENT Research to be a "marketing communication", that term is used in SBG's Research Policy. This policy is available from the Research Compliance Office at SBG. SBG does and seeks to do business with companies covered in its non-independent research reports including Marketing Communications. As a result, investors should be aware that the Firm may have a conflict of interest that could affect the objectivity of this report. Investors should consider this report as only a single factor in making their investment decision.

SBG has published a Conflicts of Interest Policy that is available upon request which describes the organisational and administrative arrangements for the prevention and avoidance of conflicts of interest. Further disclosures required under the FCA Conduct of Business Sourcebook and other regulatory bodies are available on request from the Research Compliance Department and or Global Conflicts Control Room, unless otherwise stated, share prices provided within this material are as at the close of business on the day prior to the date of the material. None of the material, nor its content, nor any copy of it, may be altered in any way, transmitted to, copied or distributed to any other party, without the prior express written permission of SBG. All trademarks, service marks and logos used in this report are trademarks or service marks or registered trademarks or service marks of SBG or its affiliates.

SBG believes the information and opinions in the Disclosure Appendix of this report are accurate and complete. Information and opinions presented in the other sections of this communication were obtained or derived from sources SBG believes are reliable, but SBG makes no representations as to their accuracy or completeness. Additional information is available upon request. SBG accepts no liability for loss arising from the use of the material presented in this report, except that this exclusion of liability does not apply to the extent that liability arises under specific statutes or regulations applicable to SBG.

The services, securities and investments discussed in this material may not be available to nor suitable for all investors. Investors should make their own investment decisions based upon their own financial objectives and financial resources and it should be noted that investment involves risk, including the risk of capital loss. Past performance is no guide to future performance. In relation to securities denominated in foreign currency, movements in exchange rates will have an effect on the value, either favourable or unfavourable. Some investments discussed in this marketing communication have a high level of volatility. High volatility investments may experience sudden and large falls in their value causing losses when that investment is realised. Those losses may equal your original investment. Indeed, in the case of some investments the potential losses may exceed the amount of initial investment, in such circumstances you may be required to pay more money to support those losses. Income yields from investments may fluctuate and, in consequence, initial capital paid to make them investment may be used as part of that income yield. Some investments may not be readily realisable and it may be difficult to sell or realize those investments, similarly it may prove difficult for you to obtain reliable information about the value, or risks, to which such an investment is exposed.

This report is issued and distributed in Europe by Standard Advisory London Limited 20 Gresham Street, London EC2V 7JE which is authorised by the Financial Conduct Authority ("FCA"). This report is being distributed in Kenya by Stanbic Bank Kenya ; in Nigeria by Stanbic IBTC; in Angola by Standard Bank de Angola S.A.; into the People's Republic of China from overseas by the Standard Bank Limited; in Botswana by Stanbic Bank Botswana Limited; in Democratic Republic of Congo by Stanbic Bank Congo s.a.r.l.; in Ghana by Stanbic Bank Ghana Limited; in Hong Kong by Standard Advisory Asia Limited; in Isle of Man by Standard Bank Isle of Man Limited; in Jersey by Standard Bank Jersey Limited; in Madagascar by Union Commercial Bank S.A.; in Mozambique by Standard Bank s.a.r.l.; in Malawi by Standard Bank Limited; in Namibia by Standard Bank Namibia Limited; in Mauritius by Standard Bank (Mauritius) Limited; in Tanzania by Stanbic Bank Tanzania Limited; in Swaziland by Standard Bank Swaziland Limited; in Zambia by Stanbic Bank Zambia Limited; in Zimbabwe by Stanbic Bank Zimbabwe Limited; in UAE by The Standard Bank of South Africa Limited (DIFC Branch).

Distribution in the United States: This publication is intended for distribution in the US solely to US institutional investors that qualify as "major institutional investors" as defined in Rule 15a-6 under the U.S. Exchange Act of 1934 as amended, and may not be furnished to any other person in the United States. Each U.S. major institutional investor that receives these materials by its acceptance hereof represents and agrees that it shall not distribute or provide these materials to any other person. Any U.S. recipient of these materials that wishes further information regarding, or to effect any transaction in, any of the securities discussed in this document, must contact and deal directly through a US registered representative affiliated with a broker-dealer registered with the U.S. Securities and Exchange Commission (SEC) and a member of the Financial Industry Regulatory Authority (FINRA). In the US, Standard Bank Group [SBG] has an affiliate, ICBC Standard Securities Inc. located at 520 Madison Avenue, 28th Floor, USA. Telephone +1 (212) 407-5000 which is registered with the SEC and is a member of FINRA and SIPC.

Recipients who no longer wish to receive such research reports should call +27 (11) 415 4272 or email SBRSupport@standardbank.co.za.

In jurisdictions where Standard Bank Group is not already registered or licensed to trade in securities, transactions will only be effected in accordance with the applicable securities legislation, which will vary from jurisdiction to jurisdiction and may require that the trade be made in accordance with applicable exemptions from registration or licensing requirements.

Standard Bank Group Ltd Reg.No.1969/017128/06 is listed on the JSE Limited. SBSA is an Authorised Financial Services Provider and it also regulated by the South African Reserve Bank.

Copyright 2019 SBG. All rights reserved. This report or any portion hereof may not be reprinted, sold or redistributed without the written consent of Standard Bank Group Ltd.

